

RELEASE NOTES



Reckon APS Tax

Version 2019.1.2

Released on 23/05/2019

Author

Created and Published by Reckon Limited
Level 2, 100 Pacific Highway
North Sydney NSW 2060
Australia
ACN 003 348 730
All Rights Reserved
Copyright © 2019 Reckon Limited

Copyright & Trademarks

No part of these materials may be reproduced or transmitted in any form or by any means, including photocopying, without written permission of Reckon Limited.

Every effort has been made to ensure the accuracy and completeness of this manual. However, neither Reckon Limited, its subsidiaries, employees and agents, are liable for any errors or omissions. This document should not be relied on as a detailed specification of the system. In addition, Reckon Limited reserves the right to issue revisions, enhancements and improvements to Reckon APS software or any other Reckon software at any time without notice. Every effort will be made to ensure that the manual is updated concurrently, and that the user is not inconvenienced as a result of any change.

Reckon, Reckon logos, R logos, Reckon APS, Advance and Accountable Technology are trademarks of Reckon Limited.

Contents

Before You Begin	4
Reference Numbers	4
Knowledge Base Article	4
Improvement & Enhancements	5
Activity Statement (AS).....	5
Batch Processing does not show period for AS	5
Issues Addressed in 2019.1.2	5
Exception of type 'SystemOutOfMemoryException' was thrown for Activity Statements	5
Taxable income of spouse drops off when re-opening the tax return.....	5
Income Tax Client Report (ITCRPT) showing "Received" while the ATO says Not Lodged....	6
Message received when trying to view ATO report "There is an error obtaining the data".....	6
CMN.ATO.TRT.432613 Net Australian income must equal income less deductions	6
Cannot create Activity Statement Amendment 2 in Tax Manager	6
Exception Generation = 1 type errors	7
Spouse worksheet not populating spouse personal details when using the 'Select' button	7
User that only has TFN is being forced to enter a valid ABN Division Number.....	7
Year is displayed as '2018' instead of '2019' in TFN Reporting and Activity Statement ELD ..	7
Elite AS created when SBR AUSKey Profile selection is cancelled	7
Validation window fields panel does not refresh after clearing 2nd last error	8
Division number of "00" and "000" is accepted when it should not be	8
Issues Addressed in 2019.1.1	9
Prelodge and Lodgement	9
Document corrupt during save operation. Rollback failed error	9
Creating and opening APS tax returns hangs	9
APPENDIX	10
SBR Service Designations	10
Forms/Return Types	10
Form Schedules.....	12
SBR Tax Agent Reports	13

Before You Begin

This document contains information on the changes made in Tax since the Reckon APS Tax 2019.1.0 release.

Reference Numbers

Items in this document contains either/or an Internal reference number and a Support reference number. From time-to-time a Reckon staff member may advise a numeric reference to an outstanding issue or enhancement request. Once that change has been released, the release notes document will include the reference and an explanation of the change.

Knowledge Base Article

For details of known issues refer to the [MyAPS](#) website. Other general knowledge base articles:

Knowledge Base Reference	Title/Description
KA-01716	Known issues
KA-01745	Agent Report instructions
KA-01744	How to create SBR Activity statements
KA-01881	How to create a simpler BAS
KA-01837	2017 and prior years AS
KA-01877	FAULTFROMAGENCY
KA-01590	ELS returns
KA-02000	EFT report

Improvement & Enhancements

Activity Statement (AS)

Batch Processing does not show period for AS

- ★ **Support Reference:** CAS-08905-J0F0H8
- ★ **Description:** The period is displaying in Tax Manager but not in Batch Processing. As the period is not showing in Batch Processing, it is difficult for the user to then select the correct AS for lodgement.

Reckon APS Tax Batch Processing

Filter By | Lodgement | ELS Files | Old ELS Files | SBR Reports

Filter Content

ent	Year	Return Type	Status	Period
	2019	Activity State...	Signed	

This has now been corrected to display the period.

- ★ **Internal Reference:** AT-2609

Issues Addressed in 2019.1.2

Exception of type 'SystemOutOfMemoryException' was thrown for Activity Statements

- ✓ **Description:** After selecting the "Business Activity Statement" from the List service window during the creation of Activity Statements, the screen seems to hang for approximately thirty seconds before an error "Exception of type 'SystemOutOfMemoryException' was thrown" occurs.

This has now been corrected.

- ✓ **Internal Reference:** AT-2622

Taxable income of spouse drops off when re-opening the tax return

- ✓ **Support Reference:** CAS-08648-R8P3X5
- ✓ **Description:** Taxable income of spouse drops off when re-opening the tax return. In certain scenarios, the receiving return was not pulling all the synchronised records from the sending return.

This has now been corrected.

- ✓ **Internal Reference:** AT-2638

Income Tax Client Report (ITCRPT) showing "Received" while the ATO says Not Lodged

- ✓ **Support Reference:** CAS-08631-K0J2P5
- ✓ **Description:** The current ITCRPT is incorrectly showing the Status of received or not-received which impedes its suitability for purpose. This was caused by the data obtained from the ATO containing more than one year with different statuses.

This has now been corrected to only display the most current year information and exclude any prior year data.
- ✓ **Internal Reference:** AT-2729

Message received when trying to view ATO report "There is an error obtaining the data"

- ✓ **Support Reference:** CAS-09284-N3F9T4
- ✓ **Description:** When trying to view the report in Standard Reporting, the message "There is an error obtaining the data" is displayed which prevents the users from seeing their report. This only affected users using SQL 2008 R2 servers. There was a function used in the current release that was not supported on SQL Server 2008 R2.

This has now been corrected.
- ✓ **Internal Reference:** AT-2607

CMN.ATO.TRT.432613 Net Australian income must equal income less deductions

- ✓ **Support Reference:** CAS-09828-V8D6K5
- ✓ **Description:** When prelodging some 2018 trust returns, the Prelodge response from the ATO is incorrectly showing CMN.ATO.TRT.432613 /xbrli:xbrl/tns:Income.Net.Amount[@contextRef='ReportingParty_Australian'] Net Australian income must equal income less deductions.

This has now been corrected.
- ✓ **Internal Reference:** AT-2780

Cannot create Activity Statement Amendment 2 in Tax Manager

- ✓ **Support Reference:** CAS-09830-B4F4H8
- ✓ **Description:** While adding a new AS return and selecting Revision Type as 2nd amendment, a list displays from the ATO indicating the amended returns to select. Once that already amended return has been picked from the list, Tax Manager still creates the return as a 1st amendment instead of a 2nd amendment.

This has now been corrected.
- ✓ **Internal Reference:** AT-2669

Exception Generation = 1 type errors

- ✓ **Description:** When creating or rolling over returns, it may error with the following messages:
 - Exception generation = 1, message: Exception of type 'System.OutOfMemoryException' was thrown.
 - Exception generation = 1, message: Failed applying changes and saving documents
 - Exception generation = 1, message: Cannot access a disposed object.This has now been corrected.
- ✓ **Internal Reference:** AT-2649

Spouse worksheet not populating spouse personal details when using the 'Select' button

- ✓ **Description:** Individual spouse worksheet does not fully populate the spouse's personal details when selecting a non-client spouse; or when the spouse is a client that has no Individual return created.
This has now been corrected.
- ✓ **Internal Reference:** AT-2705

User that only has TFN is being forced to enter a valid ABN Division Number

- ✓ **Description:** Where a user only has TFN, they cannot create the return as they are being forced to enter a valid ABN Division Number when they don't have one. It displays with the message:
'ABN Division number' can not be empty, please provide a valid 'ABN Division Number'.
This has now been corrected. When the AS is created, the ABN and Division Number fields are now editable.
- ✓ **Internal Reference:** AT-2640

Year is displayed as '2018' instead of '2019' in TFN Reporting and Activity Statement ELD

- ✓ **Description:** When printing TFN Reporting or Activity Statement, the year displayed in the Electronic Lodgement Declaration (ELD) page is shown as '2018' instead of '2019'.
This has now been corrected.
- ✓ **Internal Reference:** AT-2301, AT-2611

Elite AS created when SBR AUSKey Profile selection is cancelled

- ✓ **Description:** While during the creation of the APS Tax Activity Statement, if an SBR AUSKey profile selection displays and it is cancelled, an Elite return will be created.
This has now been corrected.
- ✓ **Internal Reference:** AT-2256

Validation window fields panel does not refresh after clearing 2nd last error

- ✓ **Description:** In the validation window, the fields panel does not refresh when clearing out the 2nd last SBR error.
This has now been corrected.
- ✓ **Internal Reference:** AT-2154

Division number of “00” and “000” is accepted when it should not be

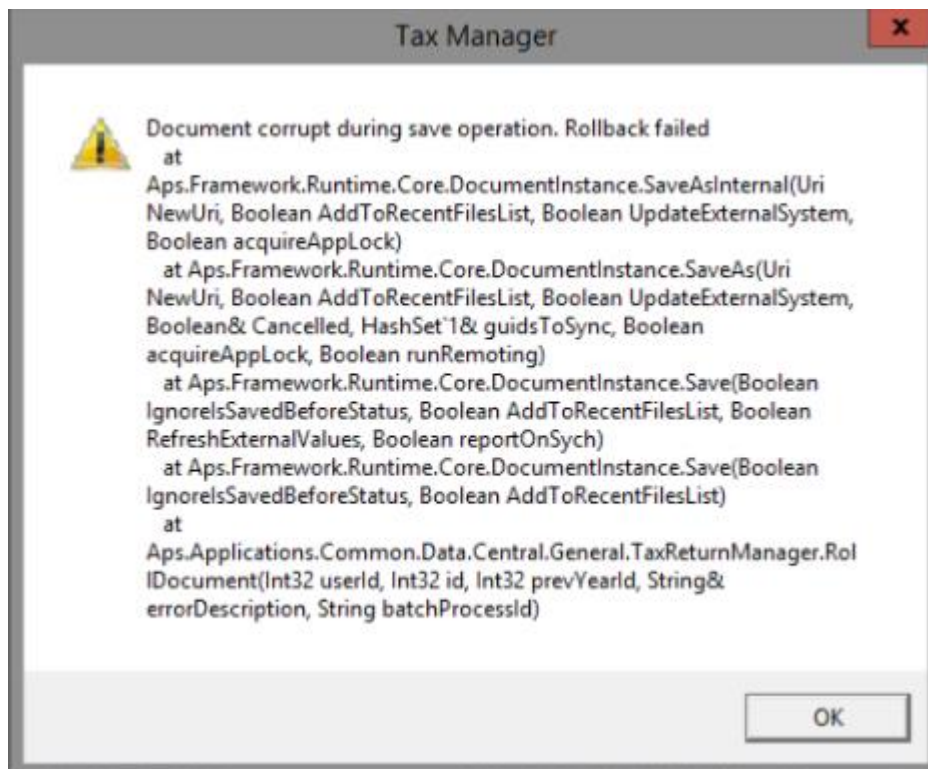
- ✓ **Description:** All entities that needs to submit an Activity Statements is required to have an ABN Division Number. The range is between 001-999. During creation of an Activity Statement, it seems that entering '00' or '000' in the ABN Division Number field is accepted and proceeds to perform the List request but this should not be the case. The ATO only accepts 1-999.
This has now been corrected.
- ✓ **Internal Reference:** AT-2328, AT-2288

Issues Addressed in 2019.1.1

Prelodge and Lodgement

Document corrupt during save operation. Rollback failed error

- ✓ **Support Reference:** CAS-07894-G1H9K6
- ✓ **Description:** This error comes up when a user is trying to add an Income Tax Return for (2017 & 2018) Individual, Partnership, Company, Trust. This error occurs whether you roll over or not and may be environmental.



This has now been corrected.

- ✓ **Internal Reference:** AT-2547

Creating and opening APS tax returns hangs

- ✓ **Support Reference:** CAS-07894-G1H9K6
- ✓ **Description:** After creating or opening a return, it shows the opening document in the bottom left, displays the return as saving the document, but then it hangs. This has been corrected.
- ✓ **Internal Reference:** AT-2521

APPENDIX

SBR Service Designations

The following table contains the full form name and SBR Acronyms as well as old ELS designation.

Forms/Return Types

Form Name	SBR	ELS
Activity Statements	AS	GA, GB, GI, GR
Client Update	CU	CU
Client Update Address Details	CUADDR	-
Client Update Client Details	CUDTL	-
Client Update Relationships	CUREL	-
Client Notify Returns Not Necessary	CURNN	-
Closely Held Trusts Withholding Reporting	CHTWTHHLD	TD
Annual Report	-	TW
TFN Report	-	TT
Closely Held Trust Withholding Report – Beneficiaries Schedule	CHTWTHHLDBEN	G
Company Tax Return	CTR	EC
Consolidated Groups Notification of Formation and Member Entrance/Exit	CGNFT	EX
Country-by-Country Report	CBC	-
Dividend and Interest Schedule	DIS	BT
Direct Debit	DD	EM

Form Name	SBR	ELS
Fringe Benefit Tax Return	FBT	EB
Fund Income Tax Return	FITR	EF
Family Trust Election, Revocation or Variation	FTER	XX
Individual Income Tax Return	IITR	EI
Interposed Entity Election or Revocation	IEE	YY
Local/Master File	LCMSF	-
Partnership Tax Return	PTR	EP
Refund of Franking Credits	RFC	VR
Self-Managed Superannuation Fund Annual Return	SMSFAR	MS
Trust Tax Return	TRT	ET
Trust Tax Return for Attribution Managed Investments	TRTAMI	-

Form Schedules

Form Name	SBR	ELS
Capital Gains Tax Schedule	CGTS	BW
Consolidated Group Losses Schedule	CGLS	BX
Consolidated Groups Notification of Formation and Member Entrance/Exit	CGNFT	EX
Deductions Schedule	DDCTNS	-
Dividends and Interest Deductions Schedule	DIDS	BJ
Dividend and Interest Schedule	DIS	BT
Employment Termination Payments	ETP	PY
Family Trust Election, Revocation or Variation	FTER	XX
International Dealings Schedule	IDS	I
Interposed Entity Election or Revocation	IEE	YY
Losses Schedule	LS	BP
Non-Resident Foreign Income Schedule	NRFI	-
PAYG Payment Summary Schedule	PSS	PS
Rental Schedule	RS	BR
Reportable Tax Position	RPTTAXPOS	-
Research and Development Tax Incentive Schedule	RDTIS	BY
Superannuation Lump Sum Schedule	SLSS	PL
Trust Attribution Managed Investments Schedule	TRTAMIS	-
Work Related Expenses Schedule	WRE	W

SBR Tax Agent Reports

The following table contains the full Agent Report name and SBR Service Designations as well as old ELS designation.

Report Name	Report Type	SBR	ELS
Activity Statement Client Report	On-Demand	ASCRPT	AS
Activity Statement Lodgment Report	On-Demand	ASLRPT	OL
Income Tax Client Report	On-Demand	ITCRPT	CL
Income Tax Lodgement Performance Report	Compulsory	ITLPRPT	OS
Electronic Funds Transfer Report	Subscribed	EFTRS	RS
Manage Agent Trust	Maintenance	MAT	-