

Release Notes



Xcede Professional Accounting

August 2020

APS
A RECKON PRODUCT 

Author

Created and Published by APS a product of Reckon Limited
Level 2, 100 Pacific Highway
North Sydney NSW 2060
Australia
ACN 003 348 730
All Rights Reserved
Copyright © 2020 Reckon Limited

Copyright & Trademarks

No part of these materials may be reproduced or transmitted in any form or by any means, including photocopying, without written permission of Reckon Limited.

Every effort has been made to ensure the accuracy and completeness of this manual. However, neither Reckon Limited, its subsidiaries, employees and agents, are liable for any errors or omissions. This document should not be relied on as a detailed specification of the system. In addition, Reckon Limited reserves the right to issue revisions, enhancements and improvements to Reckon APS software or any other Reckon software at any time without notice. Every effort will be made to ensure that the manual is updated concurrently, and that the user is not inconvenienced as a result of any change.

Reckon, Reckon logos, R logos, Reckon APS, Advance and Accountable Technology are trademarks of Reckon Limited.

Contents

Introduction	4
Reference Numbers.....	4
Knowledge Article	4
Pre-requisites	5
XPA v11.1 Ledger Update	5
Enhancements	6
BankData	6
APS BankData and XPA Product Pages.....	7
Ledger Utilities	7
Xcede 10 Access.....	7
Leased Assets	8
Apply Capital Loss on Sale?	8
Corrections	8
Appendix 1: Setting up BankData	9
SUPS settings	9
JOE Admin	10
Appendix 2: Deleting and Creating New Copy of XPA ledger	11
Creating New Copy.....	11
Deleting XPA Ledger	12

Introduction

XPA v11.1 offers enhancements and corrections to previous versions of XPA.

A major feature of this release is the BankData functionality allowing for a fast coding solution for accountants. The power of BankData for Accountants is the direct integration with XPA with no requirement to transfer or synchronise the XPA chart of accounts or the need to have 2 disparate charts the user has to learn.

This functionality is available to all XPA users who have PM11.1 installed and Cloud Services running.

The current XPA version must be uninstalled before installing XPA v11.1.

With this release of XPA v11.1, the minimum supported version will be XPA v10.5.

The following convention is used throughout this document:

- Enhancement
- ✓ Correction

Reference Numbers

Items in this document contains either/or an Internal reference and a Support reference number. From time to time a Reckon staff member may advise a numeric reference to an outstanding issue or enhancement request. Once that change has been released, the release notes document will include the reference and an explanation of the change.

Knowledge Article

For details of known issues refer to the [APS XPA Product page](#). Other general knowledge base articles:

Knowledge Base Reference	Title/Description
KA-01596	Which APS folders should be exempted from the anti-virus scanner?
KA-04143	New known issues identified with this release

Pre-requisites

BankData can be used once the pre-requisites are satisfied:

- APS Practice Management v11.1 or above
- APS Cloud Application with Cloud Services enabled (*please refer to the APS PM V.11 Cloud Application Installation notes.pdf for further information*)
- APS XPA v11 or above

Please read the Upgrade and Installation notes for XPA v11.1 that accompanies this release.



NOTE: The XPA installer no longer includes files for the Xcede Reporting Engine. Users on XPA 10.2 or prior will not be able to generate Xcede reports unless Xcede Reporting Engine [10.8.6](#) or above is installed.

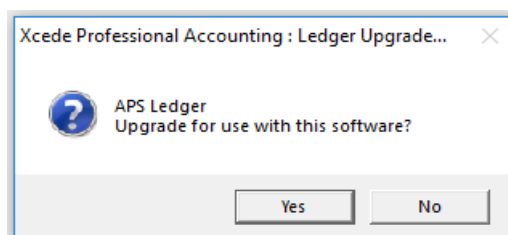
- XPA v10.5 requires an uninstall of XPA only
- XPA v10.2 or prior requires an uninstall of XPA and an install of Xcede Reporting Engine v10.8.6 or above

Please refer to [Appendix 1](#) for the setup of BankData.

XPA v11.1 Ledger Update

XPA 11.1 requires additional data structures to support the enhancements included in this release of the software, which means practice ledgers will need to be upgraded.

As each ledger is opened for the first time after installing XPA v11.1, the user will be prompted to upgrade the ledger for use with this software.



Enhancements

BankData

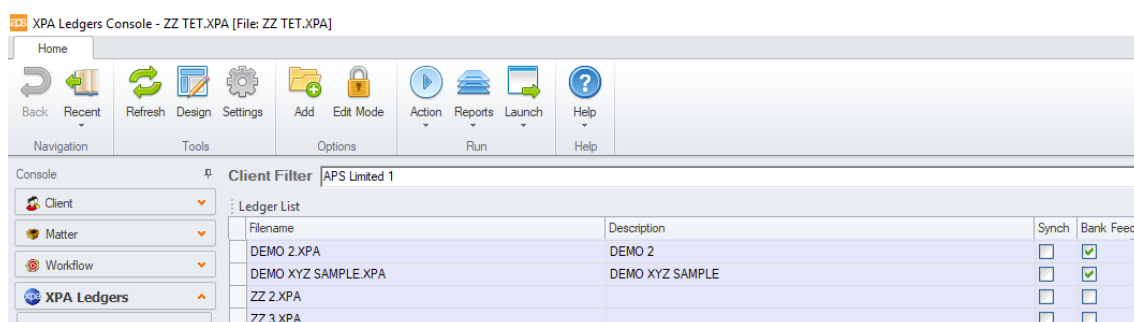
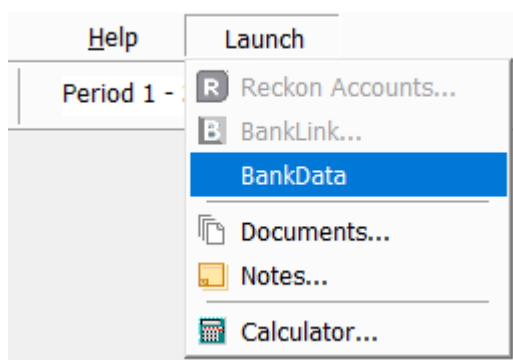
We have designed a new BankData application which is included with XPA v11.1. This enhancement gives practices the ability to perform 2 key tasks:

- Minimise the data entry process
- Transfer transactional data to XPA at the click of a button

The coding screen in the APS XPA application allows users to:

- Split or memorise transactions based on rules
- Direct coding (there is NO mapping involved as the codes are directly accessed from XPA)
- Import .qif file entries
- Extensive search function
- Defined columns per user preference
- Reports

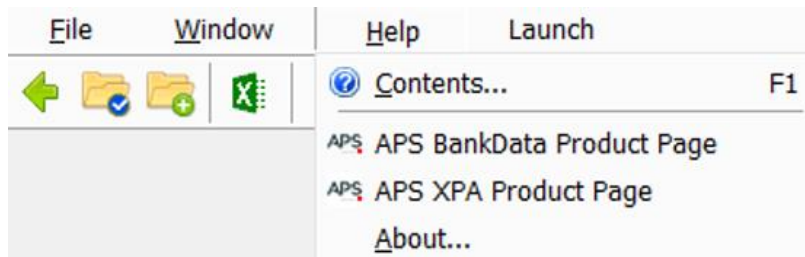
Access to BankData is from within XPA | Launch menu or from Client Console.



For more information on BankData, refer to [APS BankData for Accountants](#) or refer to the APS BankData User Guide included in this release.

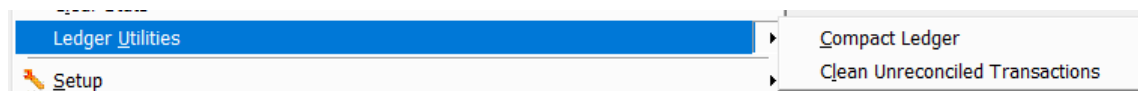
APS BankData and XPA Product Pages

- There are links to the APS BankData and the APS XPA Product Pages on the Help menu. These take you directly to information on the product and related Knowledge articles.



Ledger Utilities

We have added a Utility to allow users to compact or clean unreconciled transactions from a ledger from within the XPA ledger itself. There are 2 options under File | Ledger Utilities:



Compact Files

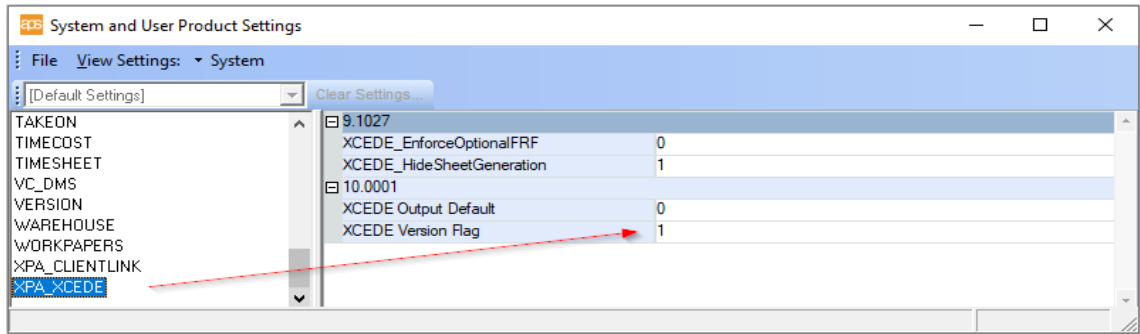
- XCEDE-2869 This utility will only compact ledgers that require compacting. Where a ledger has already been compacted, there will be no change to the file size.

Clean Unreconciled Entries

- XCED-2870 There is now an option to clear all unreconciled historical entries.

Xcede 10 Access

- XCED-2867. The version control included in XPA v11.1 will automatically set the default of Xcede to run Jobstreams in Xcede 10. This is in line with support ceasing for Xcede 9. If your practice has not moved to Xcede 10 yet, there are options in **System User Settings | Xcede** to allow Xcede 9 or Xcede 9 & 10 sheets to generate until the practice moves to Xcede 10. Use the following guide to enter the correct setting:
 - 1 = Xcede 10 Only (default)
 - 2 = Xcede 9 Only
 - 3 = Xcede 9 and 10.



Leased Assets

- XCED-3347. An asset can be identified as leased by ticking the box. This enhancement has been made to pre-empt the compliance changes regarding leased assets. Xcede reports utilising this option will be available with the next compliance release. Asset reports within XPA have not been enhanced for this option.

Apply Capital Loss on Sale?

- XCED-3642 Apply Capital Loss on Sale can be selected before saving the new asset.

Corrections

- ✓ XCED-2954 On some occasions, users were unable to refresh Financial Reporting Fields i.e. the screen would flash and exit the Financial Reporting Fields screen. This has been fixed.
- ✓ XCED-3741 Custom Financial Reporting Fields were ending up in the wrong section after a refresh from the template.
- ✓ Reckon Accounts Hosted 2020 and MYOB Essentials weren't importing with chart mapping.

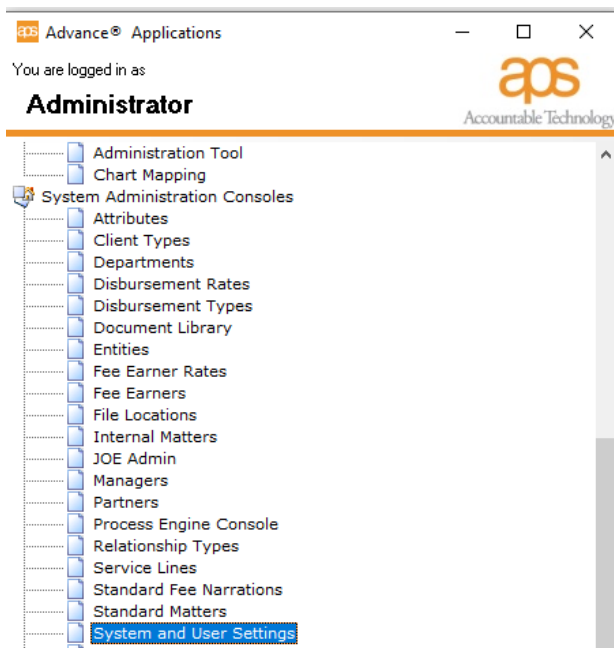
Appendix 1: Setting up BankData

SUPS settings

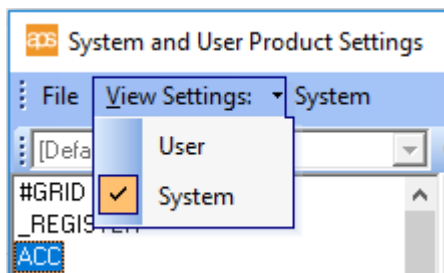
The next set of instructions assume that the XPA Upgrade and Installation notes have been read and XPA v11.1 or above has been installed **including PM11.1 Cloud services**

Once the application has been installed, change the following settings to allow access to BankData within XPA.

1. Open Advance and select the | System and User Settings



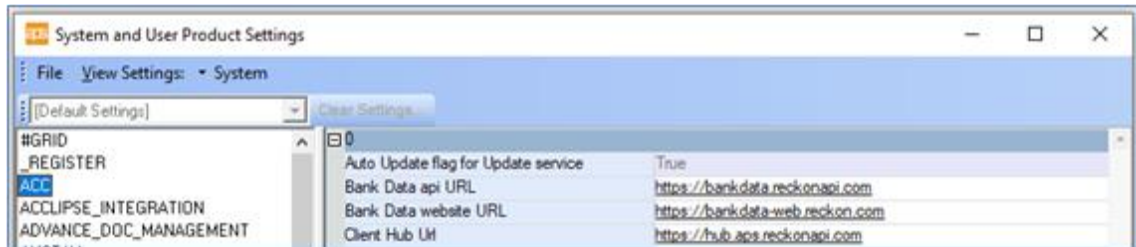
2. View settings | System



3. Select ACC and check the following URLs

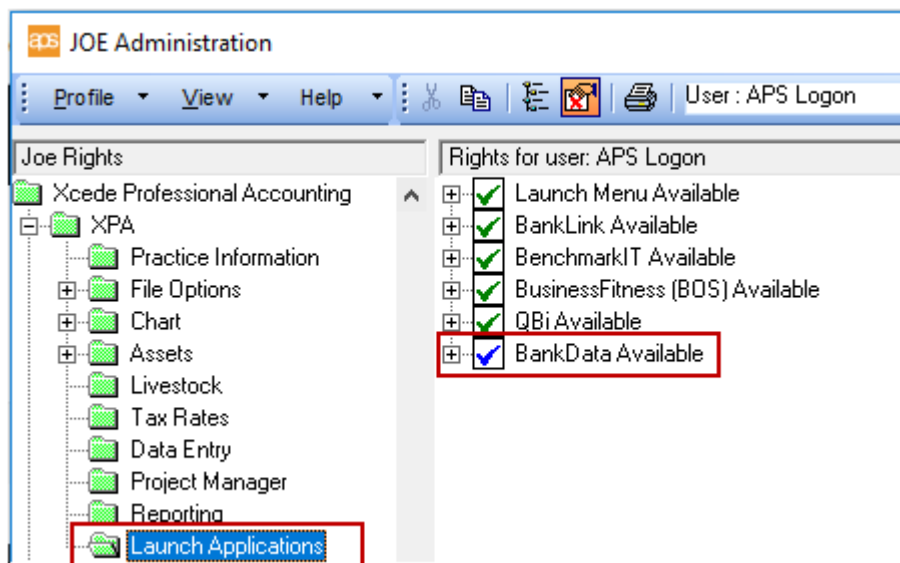
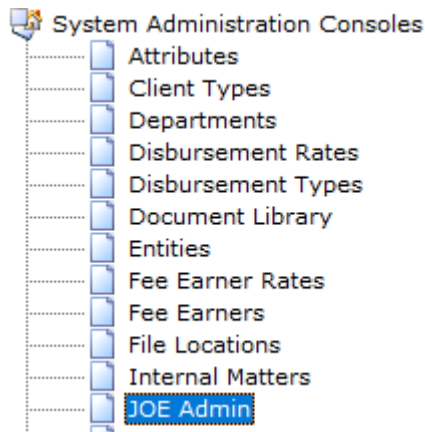
BankData api URL - <https://bankdata.reckonapi.com>

BankData website URL - <https://bankdata-web.reckon.com>



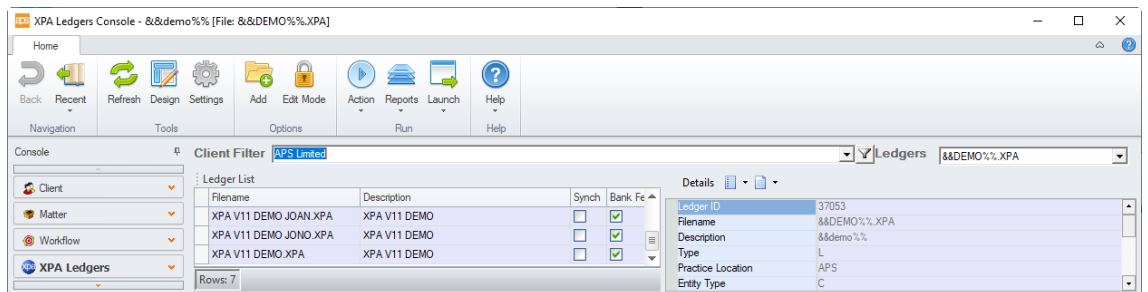
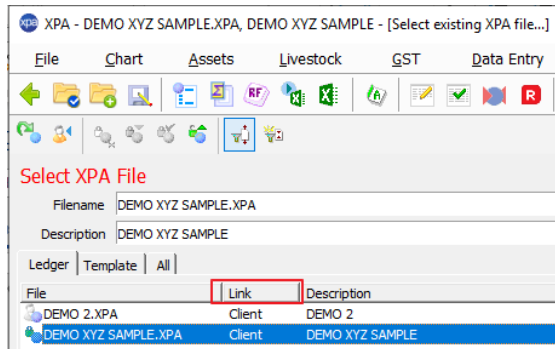
JOE Admin

Before a user can launch BankData, they require permission in JOE Administration console.



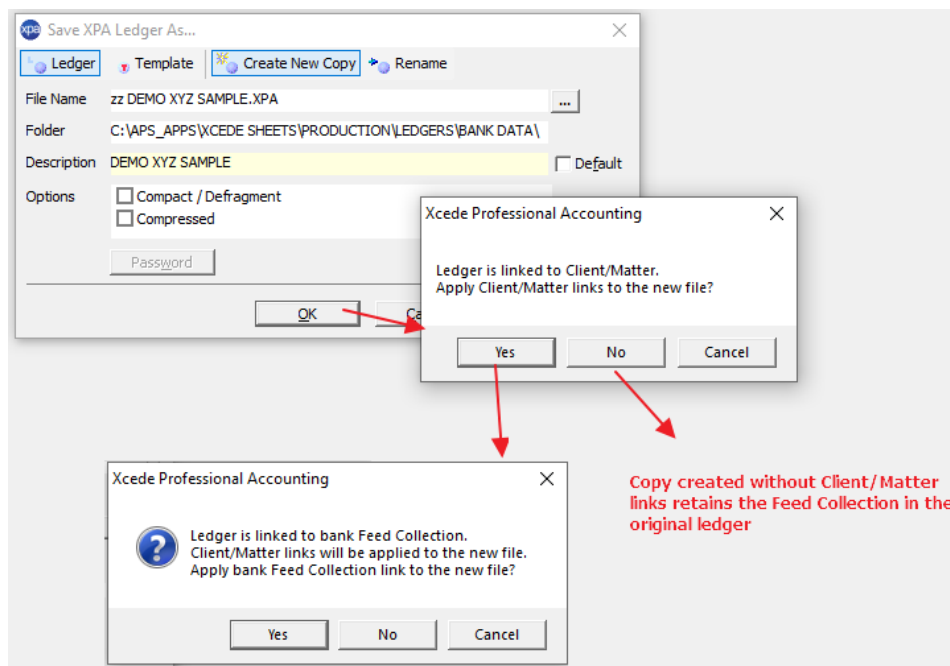
Appendix 2: Deleting and Creating New Copy of XPA ledger

BankData requires an XPA ledger to be linked to a Practice Management client before a Feed Collection can be created.

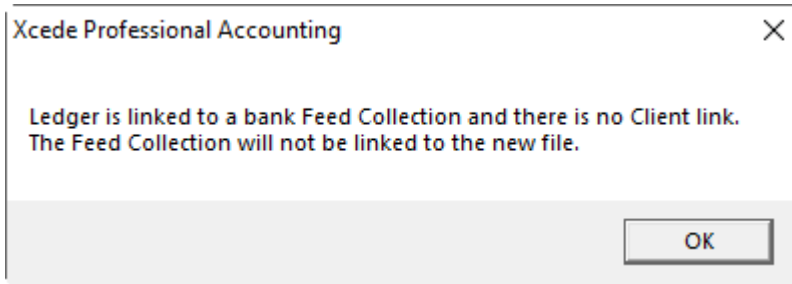


Creating New Copy

When creating a copy of a ledger that has a Feed Collection, there is an option to link the Feed Collection to the new ledger or retain the Feed Collection in the original ledger.



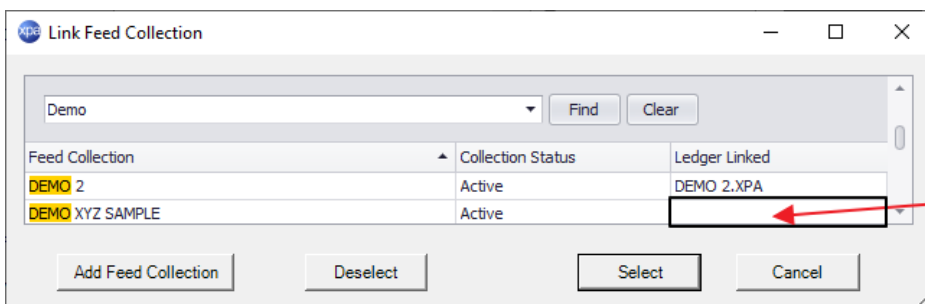
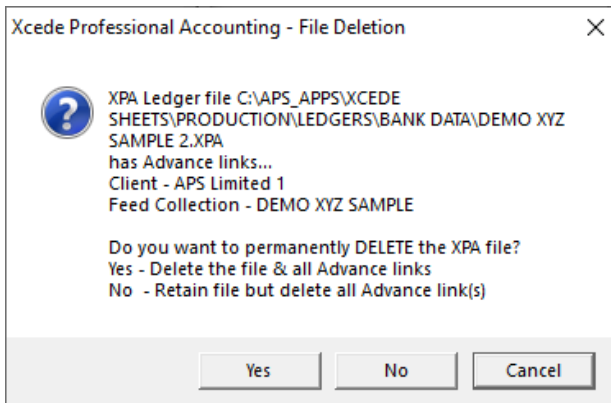
Where a Feed Collection is linked to a ledger and the Client link is subsequently deleted, copying that ledger will not move the Feed Collection to the new ledger.



Deleting XPA Ledger

Deleting a ledger with a Feed Collection will not delete the Feed Collection. The Feed Collection will become an Orphan Feed – no ledger linked. Transactions will continue to be imported into the BankData Feed Collection.

Note : You will also need to delete the bank feed directly with the bank to stop transactions being imported.



APS
A RECKON PRODUCT 