

Release Notes



APS Xcede Reporting Engine

Version 10.8.6

APS
A RECKON PRODUCT 

Author

Created and Published by APS a product of Reckon Limited
Level 2, 100 Pacific Highway
North Sydney NSW 2060
Australia
ACN 003 348 730
All Rights Reserved
Copyright © 2019 Reckon Limited

Copyright & Trademarks

No part of these materials may be reproduced or transmitted in any form or by any means, including photocopying, without written permission of Reckon Limited.

Every effort has been made to ensure the accuracy and completeness of this manual. However, neither Reckon Limited, its subsidiaries, employees and agents, are liable for any errors or omissions. This document should not be relied on as a detailed specification of the system. In addition, Reckon Limited reserves the right to issue revisions, enhancements and improvements to Reckon APS software or any other Reckon software at any time without notice. Every effort will be made to ensure that the manual is updated concurrently, and that the user is not inconvenienced as a result of any change.

Reckon, Reckon logos, R logos, Reckon APS, Advance and Accountable Technology are trademarks of Reckon Limited.

Contents

Before You Begin	4
Reference Numbers	4
Knowledge Article.....	4
Introduction	5
Pre-requisites	5
Main Features of this Release	5
Improvements	6
Corrections	9

Before You Begin

This document contains information on the enhancements and corrections to the Xcede Reporting Engine.

Reference Numbers

Items in this document contains either/or an Internal and a Support reference number. From time to time a Reckon staff member may advise a numeric reference to an outstanding issue or enhancement request. Once that change has been released, the release notes document will include the reference and an explanation of the change.

Knowledge Article

For details of known issues refer to the [MyAPS](#) website. Other general knowledge base articles:

Knowledge Base Reference	Title/Description
KA-01596	Which APS folders should be exempted from the anti-virus scanner?
KA-02494	Advises users of any new known issues with Xcede Reporting Engine.

Introduction

This release includes enhancements and corrections to the Xcede Reporting Engine.

The following convention is used throughout the document:

★ Enhancement

✓ Correction



IMPORTANT!

You are required to be on XPA v10.5 to capitalise on the new Xcede Reporting Engine functionality and Xcede Sheets August 2019 package.

Pre-requisites

This release is only applicable to users on XPA v10.5 or above and is compatible with Microsoft Office/Excel 2013, 2016, 2019 and Office 365.

Main Features of this Release

This Xcede Reporting Engine release package includes:

- New Installer with new options for installation and maintenance.
- Improvements to the Xcede User Interface.
- Automatic Calculation mode in Excel for Data Import.
- Corrections

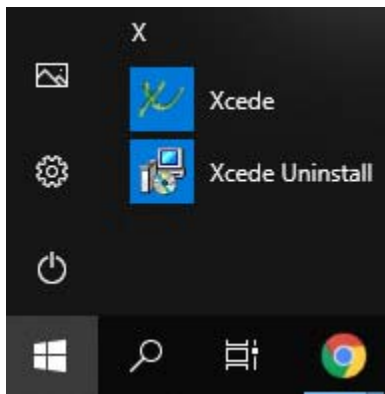
Improvements

Xcede Installer

★ XCED-2886. The new Xcede Installer allows Xcede integration to the system. This enhancement adds extra options to the installer:

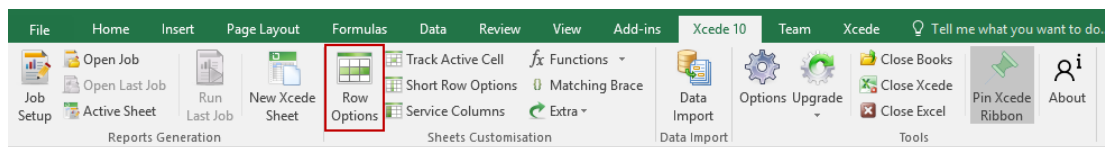
- add Xcede to Excel Start-up,
- add Xcede to Windows Start Menu,
- add Xcede shortcut to the desktop.

Start Menu integration allows launching Xcede from Start Menu (as well as Pin to Start option) and uninstalling.



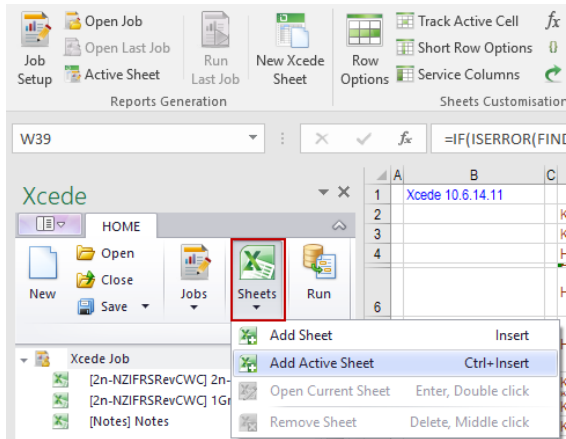
Xcede User Interface

★ XCED-1972: The Xcede User Interface has been changed to enlarge the 'Row Options' menu icon, giving a better experience to frequent users of the Xcede developer tools.

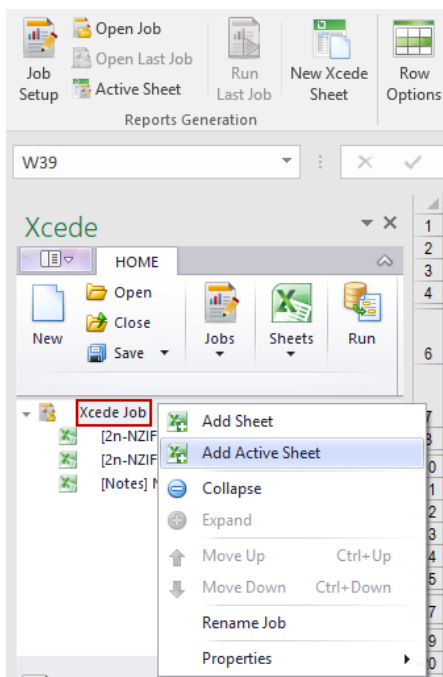


★ XCED-2726: Xcede has been enhanced to enable Xcede developers to add an active sheet to an Xcede Job:

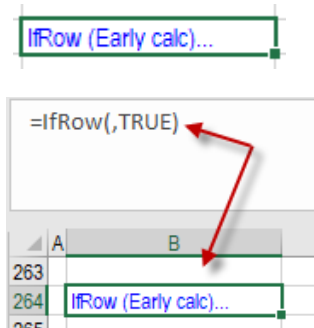
- Select Add Active Sheet from the Sheets drop-down menu, OR



- Right click on Xcede Job and select Add Active Sheet.

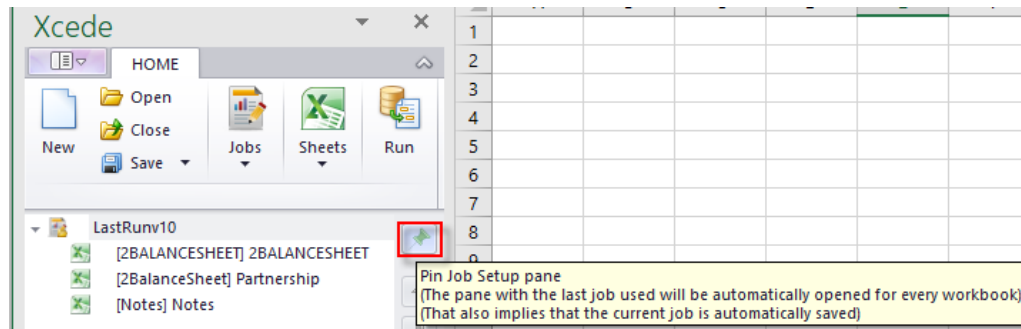


- ★ XCED-2341: A visual cue has been added to display 'Force Early Calculation' for IfRow() where sheets are in edit mode.



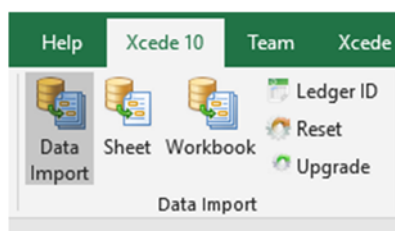
Note: The ForceEarlyCalculation parameter can be used if an IfRow() result is not dependent on other control functions, such as IfRow(), Accounts() etc., and can improve performance significantly.

- ★ There is a new experimental enhancement allowing the user to Pin the Job Setup Pane so that the job is visible on every open workbook. The restrictions are: the current job is auto saved and only one job can be open at a time.



Data Import

- ★ XCED-2795: The look and feel of the Data Import User Interface (UI) on the Xcede 10 ribbon has been improved:
 - There is only one Data Import button. Click to expand or collapse the Data Import UI controls. The ability to collapse the UI means that it is not cluttered for users who don't require the Data Import functionality
 - **Data Import** into the active Sheet or Workbook
 - Set **Ledger ID** named cell
Names the active cell to '_APS_Ledger_Id'
 - **Reset** Imported Values; values on the active workbook are reset.
 - **Upgrade** and Save the Active Workbook
All Xcede 9 formulas are upgraded to Xcede 10.



- ★ XCED-2928. The Data Import caching mechanism has been implemented.
 - After data is imported to a worksheet/workbook, there are no restrictions on how to manipulate data. Formulas and cells can be edited, recalculated, the worksheet/workbook can be recalculated - the Xcede imported data will be preserved.
 - Imported values are reset if Data Import Reset button is pressed or if Excel is closed.
 - Excel can be in automatic or manual calculation mode - Data Import will keep it as is.

- The previous behaviour can be turned on in Xcede options. (option “Keep Data Import cache”)

Corrections

- ✓ XCED-2796 Data Import values were being reset after workbooks had been closed and then re-opened. Data Import values were being lost and had to be recalculated.

This issue was due to an Excel update which caused all Excel and Xcede functions to be recalculated when workbook was opened in Excel in Auto Calculation mode.

- ✓ XCED-2412: Clicking the Cancel button on the Function Wizard caused removal of existing formulas in a cell. This has been fixed.
- ✓ XCED-2670/ CAS03683/KA-01691: Where a Tag Set was included in an Accounts_* function, e.g. Accounts_OB(), Accounts_YTD() etc., an incorrect value was returned where the accounts in the Tag Set had different signs. This has been fixed.
- ✓ XCED-2336: When a range of sub accounts was specified in the Accounts YTD() function, Xcede incorrectly returned the value of the control account. This has been fixed.
- ✓ XCED-2448: In the Paragraph() formula, where the first bit of text to be displayed was based on an IF() formula that returned " ", the remaining rows in the text box not to print either. This has been fixed.

APS
A RECKON PRODUCT 