

RELEASE NOTES



Xcede Professional Accounting

Version 10.5

Author

Created and Published by Reckon Limited
Level 7, 65 Berry Street
North Sydney NSW 2060
Australia
ACN 003 348 730
All Rights Reserved
Copyright © 2018 Reckon Limited

Copyright & Trademarks

No part of these materials may be reproduced or transmitted in any form or by any means, including photocopying, without written permission of Reckon Limited.

Every effort has been made to ensure the accuracy and completeness of this manual. However, neither Reckon Limited, its subsidiaries, employees and agents, are liable for any errors or omissions. This document should not be relied on as a detailed specification of the system. In addition, Reckon Limited reserves the right to issue revisions, enhancements and improvements to Reckon APS software or any other Reckon software at any time without notice. Every effort will be made to ensure that the manual is updated concurrently and that the user is not inconvenienced as a result of any change.

Reckon, Reckon logos, R logos, Reckon APS, Advance and Accountable Technology are trademarks of Reckon Limited.

Contents

Introduction	4
Known Issues	4
Reference Numbers	4
XPA Enhancements	5
AIM Activity Statement (for NZ Tax users only).....	5
XPA 10.5 Ledger Update	5
XPA Corrections	8
Report Selector	8
Xcede.net Enhancements and Corrections	8
Appendix 1	9
Setting up to use AIM.....	9
SUPS settings	9
JOE Rights	9
Tax Info Page.....	10
Tag Set selection	10
XPA Ledgers	12
How to Launch AIM return form	12
AIM Viewer	14
Determinations	16
IRD Authentication	18

Introduction

XPA 10.5 offers enhancements and corrections to previous versions of XPA. A major feature of this release is the ability to link to AIM via Chart menu in XPA. The AIM feature is available for NZ clients only; the details will be included in the AIM release notes, made available shortly.

The current XPA version must be uninstalled before installing XPA version 10.5.

With this release of XPA 10.5, XPA versions 9.3 or lower, will no longer be supported.

The following convention is used throughout this document:

- ★ Enhancement
- ✓ Correction

Known Issues

A knowledge base article has been created to record any new known issue as a result of this release – Knowledge Base article **10501**. The known issues are detailed separately in the knowledge base article, linked to the knowledge article #. For each 'FIXED' article the linked Knowledge Article will contain details on how to obtain the update. For each 'LOGGED' article, the issue has been logged for development and will be resolved in a future release.

To review the Knowledge Base Article 10501, visit the MyAPS Portal, enter the article number click the search button.

MyAPSPortal - http://myaps.aps-advance.com/vsm_prod/ServiceManager.aspx?Lite

Reference Numbers

Some items in this document are prefixed by a corresponding reference number. From time to time a Reckon staff member may advise you of a reference number for an outstanding issue or enhancement request. Once that change has been released, the release notes document will include the reference and an expression of the change.

XPA Enhancements

AIM Activity Statement (for NZ Tax users only)

The AIM activity statement is now available via the Chart menu in XPA. This capability can be used once the pre-requisites are satisfied:

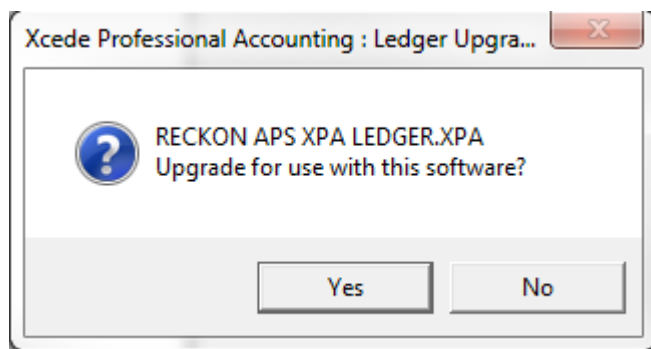
- Reckon APS Practice Management version 11
- Reckon APS NZ Tax version 9.4157
- Reckon APS XPA version 10.5

Please refer to Appendix 1 on how to get AIM setup and how to launch the AIM Statement for a XPA Ledger.

XPA 10.5 Ledger Update

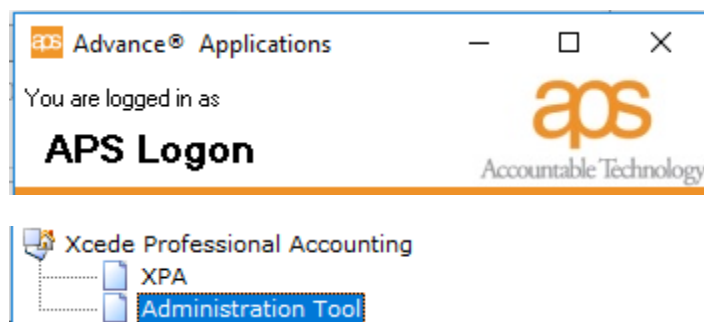
XPA 10.5 requires additional data structures to support the enhancements included in this release of the software which means practice ledgers will need to be upgraded.

As each ledger is opened for the first time after installing XPA 10.5, the user will be prompted to upgrade the ledger for use with the current release of the software.

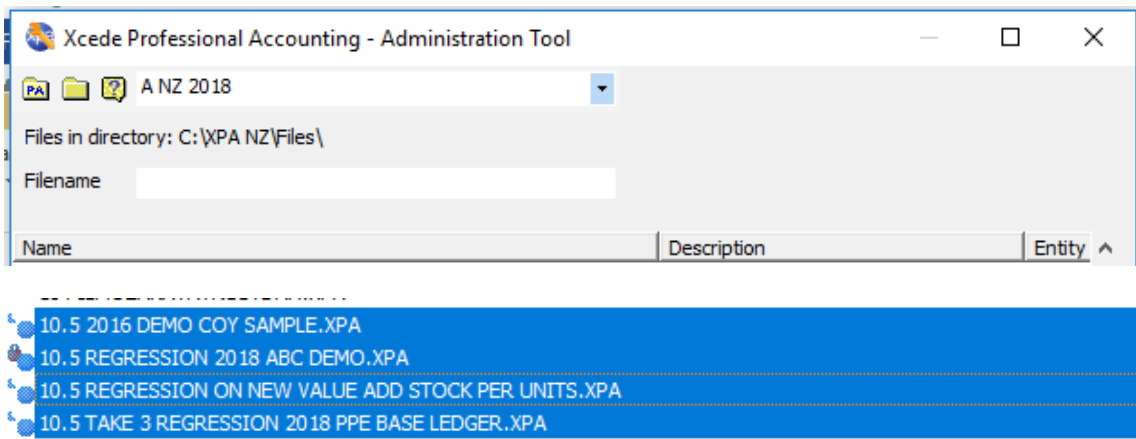


The Administration Tool can be used to upgrade the XPA ledgers in bulk if your practice prefers.

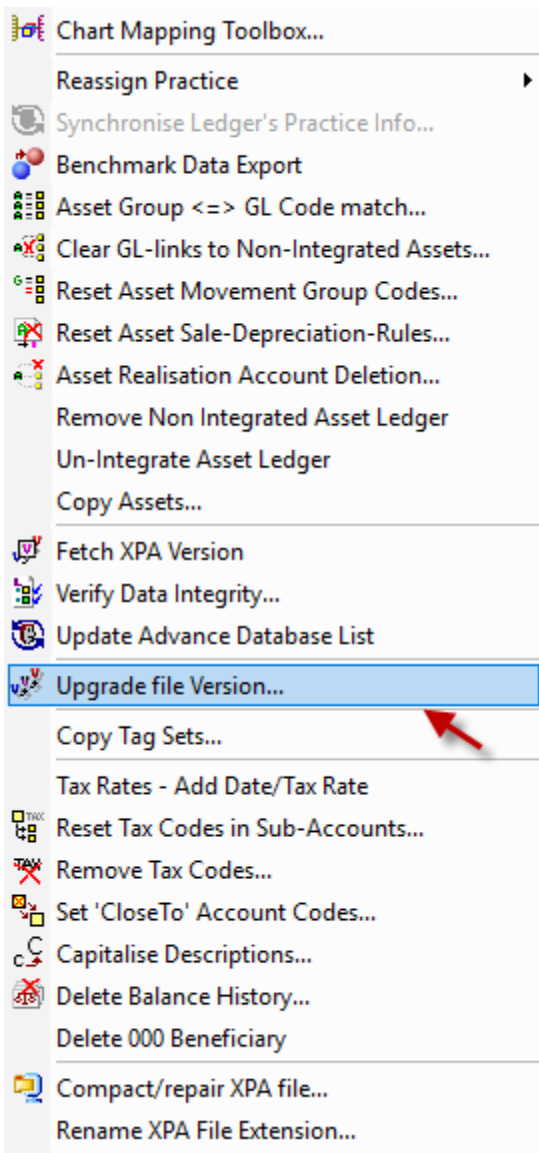
Select the Administration Tool option



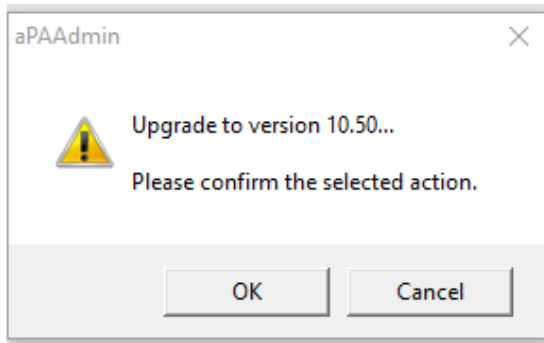
Highlight the ledgers you wish to upgrade



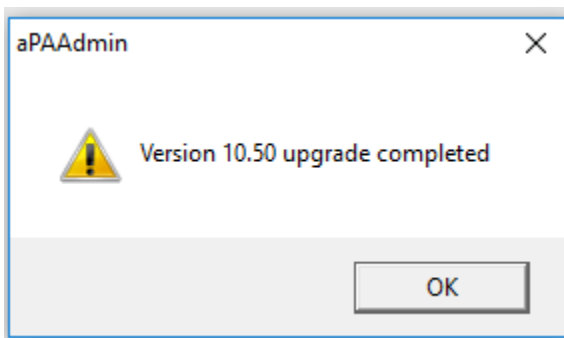
Right click and select 'Upgrade file Version'



Select ok to continue



The following screen is displayed once the files have been upgraded.



We also recommend that the Financial Reporting fields are refreshed once the ledger has been upgraded.



NOTE: The XPA installer no longer includes files for the Xcede Reporting Engine. Please refer to Reckon APS Xcede Reporting Engine documentation for further details.

Please read the entire document before proceeding with the upgrade.

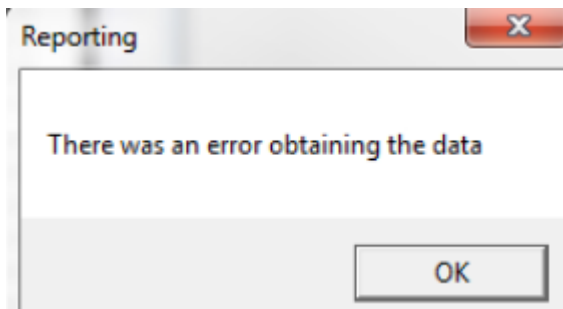
XPA Corrections

The following issues have been corrected.

- ✓ #XCED-43. Syntax Error copying newly created Tag Sets from the Master templates to Ledgers.
- ✓ #XCED-57. Refreshing one template set, cleared the 'Use Template' settings on other sets.

Report Selector

- ✓ #XCED-47. The Trial balance drill down to general ledger option created the following error in some cases.



Xcede.net Enhancements and Corrections

Please refer to the Reckon APS Xcede Reporting Engine Release and the APS Xcede Reporting Engine Upgrade and Installation notes for Xcede related enhancements and corrections.

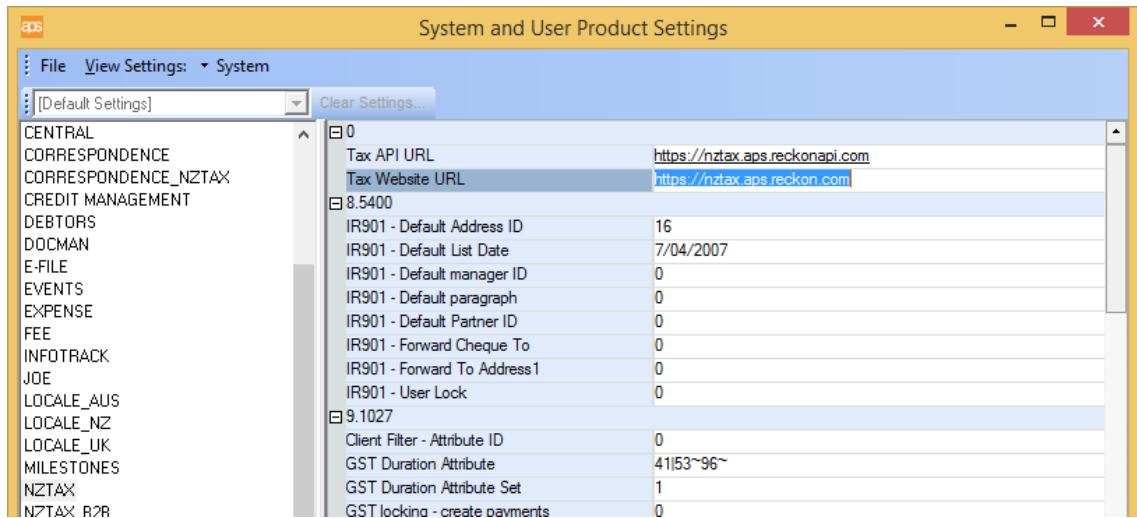
Appendix 1

Setting up to use AIM

SUPS settings

The Tax Website url must be correctly specified, to allow launching of the correct webpage.

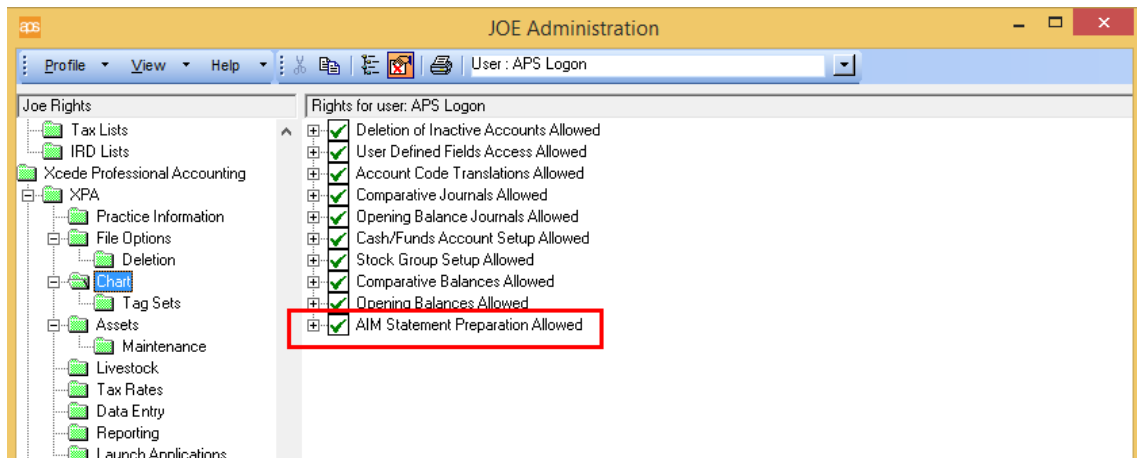
This is for information only, the correct url is specified by the version control, so there is no need to change this setting.



JOE Rights

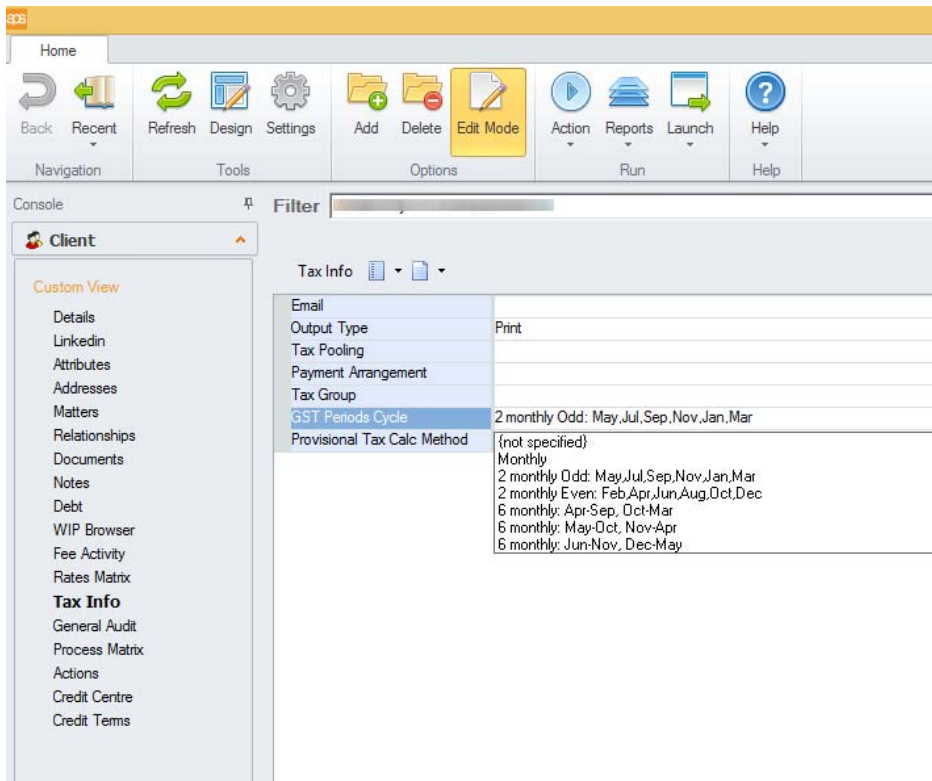
The following JOE Rights will need to be enabled to allow access to the AIM option within XPA.

AIM Statement Preparation Allowed is shown in the Chart subsection of the XPA folder.



Tax Info Page

We are able to specify the default GST Periods Cycle for each client. This is located in the Tax Info page of the Client console:

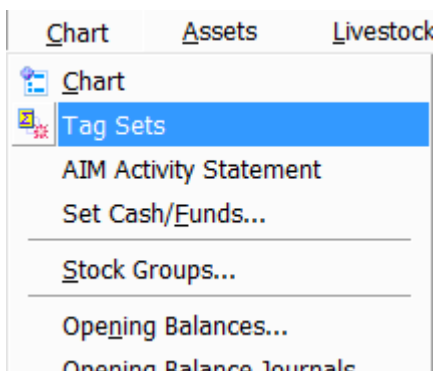


If this is not set, the cycle can still be chosen later when generating the returns for the first time.

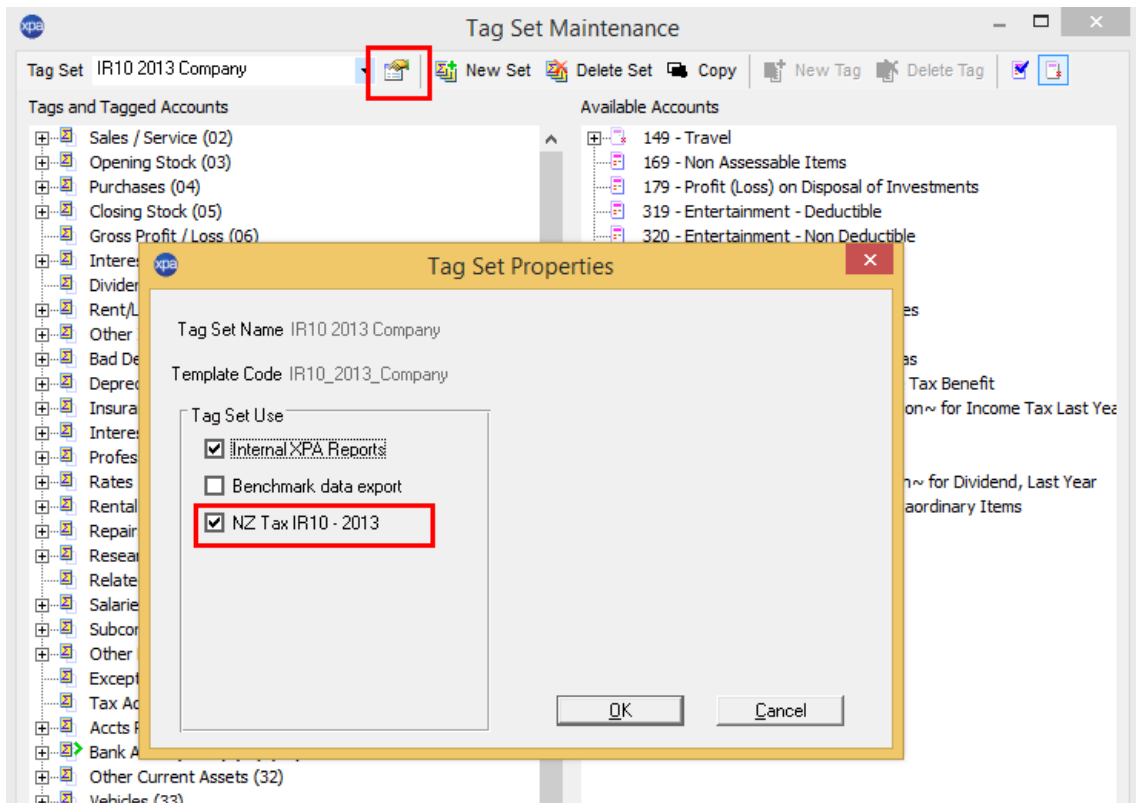
Tag Set selection

It is advisable to check which tag set is currently set to extract IR10 data.

In XPA, choose Chart menu, Tag Sets:



In the tag set maintenance window, select the tag set you wish to use, then click the icon to the right.



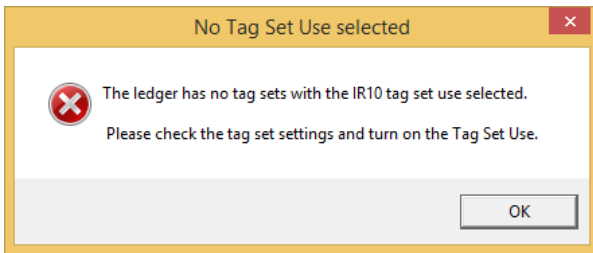
In the tag set properties, ensure that the option 'NZ Tax IR10-2013' is checked.

Only one tag set should have this attribute selected at any one time. When editing or merging IR10 tag sets, it is advisable to remove the old tag set, or uncheck this setting, so that only the correct tag set is available to AIM.

If more than one tag set has this item checked, the AIM return will display a list of eligible tag sets to choose from when launching the return form.



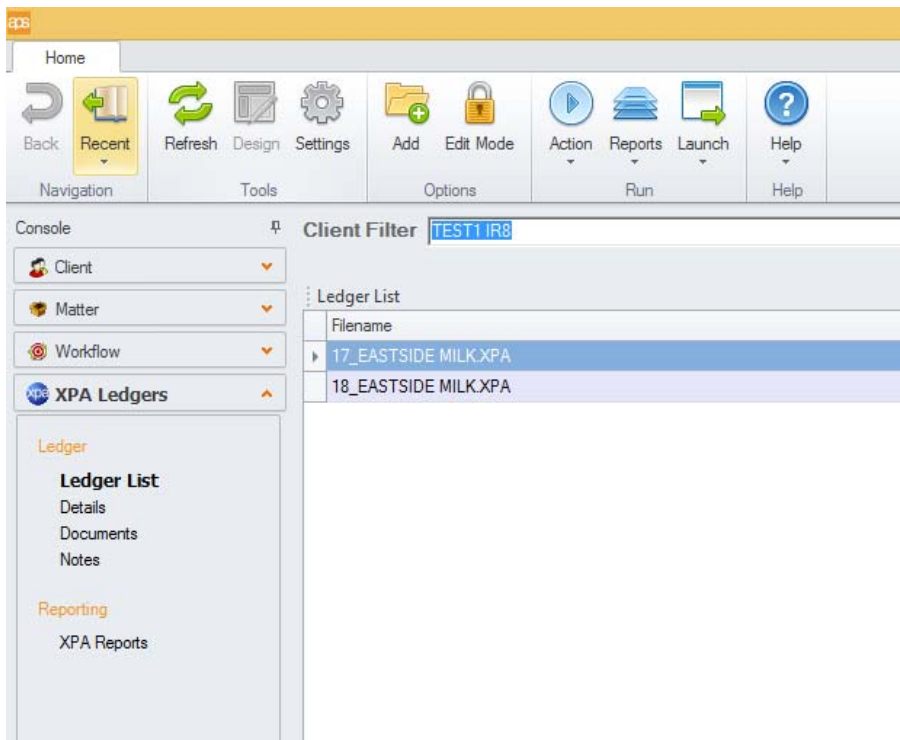
If no ledgers have the IR 10 tag set chosen, a message is displayed and you will not be able to launch an AIM return until at least one IR10 tag set has this attribute:



XPA Ledgers

AIM returns require an XPA ledger to be linked to the applicable client record within PM. If the ledger is not linked to a client record, the AIM Activity Statement menu option is not available in XPA Chart menu.

To check this, open the XPA band and choose Ledger list page. If the client is linked there will be one or more ledgers shown here:

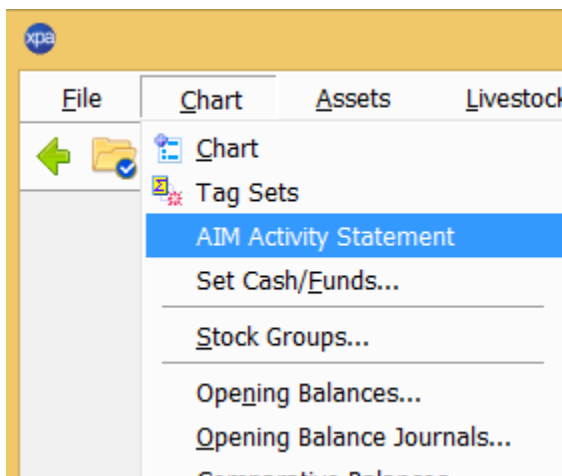


How to Launch AIM return form

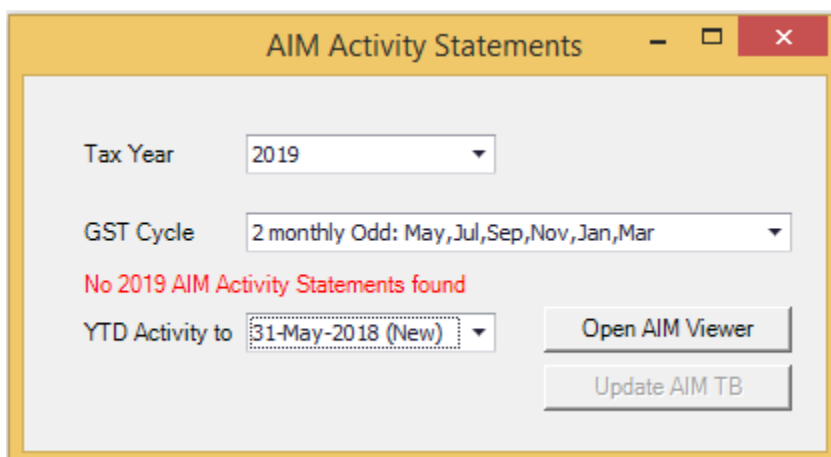
The AIM return is a web-based form, which connects to and submits directly to the IRD Gateway Services.

Part of the data that is required already exists in your XPA ledgers, this data is in parallel with existing IR10 data. This is also determined by the Tag Set that is configured within XPA to use IR10 data.

To launch an AIM return, open the XPA Chart menu. A new option has been added for AIM Activity Statement. This is only available if the entity type for the linked ledger is 'Company' or 'Sole Trader', and the assigned country is New Zealand.



The following popup will appear.



The defaults here are defined as follows:

Tax Year: This is based on the current tax year settings held within the Tax application. As this is the 1st year AIM is available, currently it is set to 2019, in subsequent years you will be able to choose from a list.

GST cycle, this is a per client default value which is defined in the previous setup section. You may change this here if the default is incorrectly set, or if the client has changed frequency.

YTD Activity to: this is based on the next available return date, decided by the current selection for GST cycle and also shows the status of the AIM return (In the example above, the status is 'New' because the AIM return has not yet been generated).

Once a return has been generated, but not completed, accessing the AIM Activity Statement option again in XPA, the status will now show as Draft.

In the example above, I have already created, but not yet lodged, the 1st AIM return for this client. As the return is in a draft state, it can be re-opened. Once the return has been lodged, the date defaults to the next period in the GST cycle, and is shown as New.

When I select the Open AIM Viewer, the new web page will launch. Any previously submitted return(s) will also show in this list, but will not be editable, as they have been lodged.

If a return is in New or Draft status, the next return cycle is not available for selection until the current one has been lodged successfully. Similarly, it is not possible to generate returns for any missed periods, since the next period is automatically defined.

When launching a new return for the first time, you may be shown an additional popup or message relating to tag sets. Please refer to the notes in the previous section of this document regarding tagset setup.

AIM Viewer

When launching the AIM viewer, you will be required to authenticate your credentials using the following Cognito popup.

If you have not already created an account for this, you will be prompted to register first.

The authentication token generated by this login will expire periodically if not in use and may need to be renewed multiple times. Most browsers allow the logins to be saved automatically, so all that is required is to click Sign in button when prompted.

The AIM Activity Statement will now appear.

ReckonAPS AIM

Client Name - AIM_COMP_2MODD Period End-date 31-May-18 New

Trial Balance Data | AIM Activity Statement

	Year to 31-May-18	No previous return	Statement Status
Profit to date(IR10)	111921.00		New
Determinations adjustment	0.00		IRD Status
Losses claimed	0.00		
Taxable income	111921.00		
Income tax rate	28 %	%	Balance in arrears
Calculated tax to pay	31337.88		Prov to Pay(Refund) 31337
			Refund claimed 0.00

IR10	Income	Amount	INCOME determinations	
2	Sales	71864.00	Invoiced sales adjustment	0.00
3	Opening stock	63792.00		
4	Purchases	4536.00	Closing stock adjustment	0.00
5	Closing stock	13000.00		
6	Gross profit	16536.00	Assessed prior year losses	0.00
7	Interest received	1112.00		
8	Dividends received	0.00	Recovered dep'n adjustment	0.00
9	Rent, lease, licence income	8549.00		
10	Other income	49.00		
11	Total income	26246.00		
IR10	Expenses	Amount	EXPENSE determinations	
12	Bad Debts	732.00	Creditor expense adjustment	0.00
13	Depreciation/Amortisation	3460.00	Depreciation adjustment	0.00
14	Insurance	3237.00	Private use expense adjustment	0.00
15	Interest expense	343.00		
16	Fees	0.00		
17	Rates	463.00		
18	Rent/Leases/Licences	5832.00		
19	Repairs and maintenance	627.00	Shareholder salary provision	0.00
20	Research and development	0.00	Tax paid on salaries provision	0.00
21	Associated persons' remuneration	0.00		

Note the client name is displayed at the top, and the period end date is displayed in a drop-down menu in the top right. Once multiple returns have been submitted they will all be displayed and selectable from this list. (Once lodged they cannot be edited).

The status will initially show as New, until the return has been saved, then it will display as Draft, until it is Lodged.

The format is designed to resemble the actual IR10 paper return layout; the keypoint numbers will match the IRD form.

Any IR10 values that may have been entered in the XPA ledger will also be displayed in the Amount column.

Prepop from IRD - Clicking the Prepop from IRD button will at this point connect with the IRD and for this particular client, update the relevant values. These values cannot be edited on this form. Prepop is generally used initially at the start of the tax year to use the IRD values but it can be used at any time during the tax year (for example a new taxpayer starting part way through or to obtain 'Losses claimed' figures that are only available after the Return has been assessed).

Check IRD Status button is also useful if you are unsure whether the client is setup with IRD to use AIM. If the client has not yet lodged a return, the message 'Customer not enrolled in AIM' will be displayed. Subsequent returns will return a value, such as 'Expected'.

Refresh simply reloads the stored AIM statement's IR10 into the page and applies the values to calculations. This is useful if you have made amendments in the XPA ledger that affect IR10 values in the AIM statement while the web page remains open.

Save will apply any changes and commit to the database if valid.

Save and Lodge will lodge the AIM return with IRD, and update the status. The AIM return for that period is then complete.

The calculations section at the top will display any applicable values based on any calculated tax to pay and/or refunds dues, as well as any determinations that have been entered.

Once a return has been lodged, when moving to the next period, the previous returns values will display in the 2nd column. If there are no previous returns (or when processing the 1st return of the current tax year), this will display No previous return.

Trial Balance Data		AIM Activity Statement	
	Year to 31-May-18	No previous return	Statement Status Draft
Profit to date(IR10)	111921.00		IRD Status
Determinations adjustment	0.00		
Losses claimed	0.00		
Taxable income	111921.00		
Income tax rate	28 %	%	Balance in arrears
Calculated tax to pay	31337.88		Prov to Pay(Refund) 31337
			Refund claimed 0.00
Prepop from IRD		Check IRD Status	Refresh
Save		Save & Lodge	

Determinations

There are various Income and Expense type determination values that can be entered which will affect the calculation of the final return value. (For detailed information on Determinations, please click the link to IRD AIM information <http://www.ird.govt.nz/technical-tax/determinations/aim/determinations-aim-index.html>)

IR10	Income	Amount	INCOME determinations	
2	Sales	961629.00	Invoiced sales adjustment	<input type="text" value="230.00"/>
3	Opening stock	63792.00		
4	Purchases	67732.00	Closing stock adjustment	<input type="text" value="0.00"/>
5	Closing stock	13000.00		
6	Gross profit	843105.00	Assessed prior year losses	<input type="text" value="0.00"/>
7	Interest received	6489.00		
8	Dividends received	0.00	Recovered dep'n adjustment	<input type="text" value="0.00"/>
9	Rent, lease, licence income	60141.00		
10	Other income	11098.00		
11	Total income	920833.00		
IR10	Expenses	Amount	EXPENSE determinations	
12	Bad Debts	6806.00	Creditor expense adjustment	<input type="text" value="0.00"/>
13	Depreciation/Amortisation	20700.00	Depreciation adjustment	<input type="text" value="0.00"/>
14	Insurance	17193.00	Private use expense adjustment	<input type="text" value="0.00"/>
15	Interest expense	4578.00		
16	Fees	4057.00		
17	Rates	7092.00		
18	Rent/Leases/Licences	36037.00		
19	Repairs and maintenance	6288.00	Shareholder salary provision	<input type="text" value="0.00"/>
20	Research and development	1440.00	Tax paid on salaries provision	<input type="text" value="0.00"/>
21	Associated persons' remuneration	0.00		
22	Salaries and wages paid to employees	270042.00	Disallowed expense provisions	<input type="text" value="0.00"/>

The values in the Amount column for the IR10 cannot be edited, but the determinations can be used to make adjustments to some of these values where this is allowed according to the IRD rules around Determinations.

As these values are entered, the calculations section at the top of the form will automatically update.

ReckonAPS R
AIM

Client Name - AIM_COMP_2MODD
Period End-date 31-May-18 Draft ▼

Trial Balance Data
AIM Activity Statement

	Year to 31-May-18	No previous return	
Profit to date(IR10)	111921.00		Statement Status Draft
Determinations adjustment	175100.00		IRD Status
Losses claimed	0.00		
Taxable income	287021.00		
Income tax rate	28 %		Balance in arrears
Calculated tax to pay	80365.88		Prov to Pay(Refund) 80365
			Refund claimed 0.00

↓ Prepop from IRD
→ Check IRD Status
↻ Refresh
💾 Save
▶ Save & Lodge

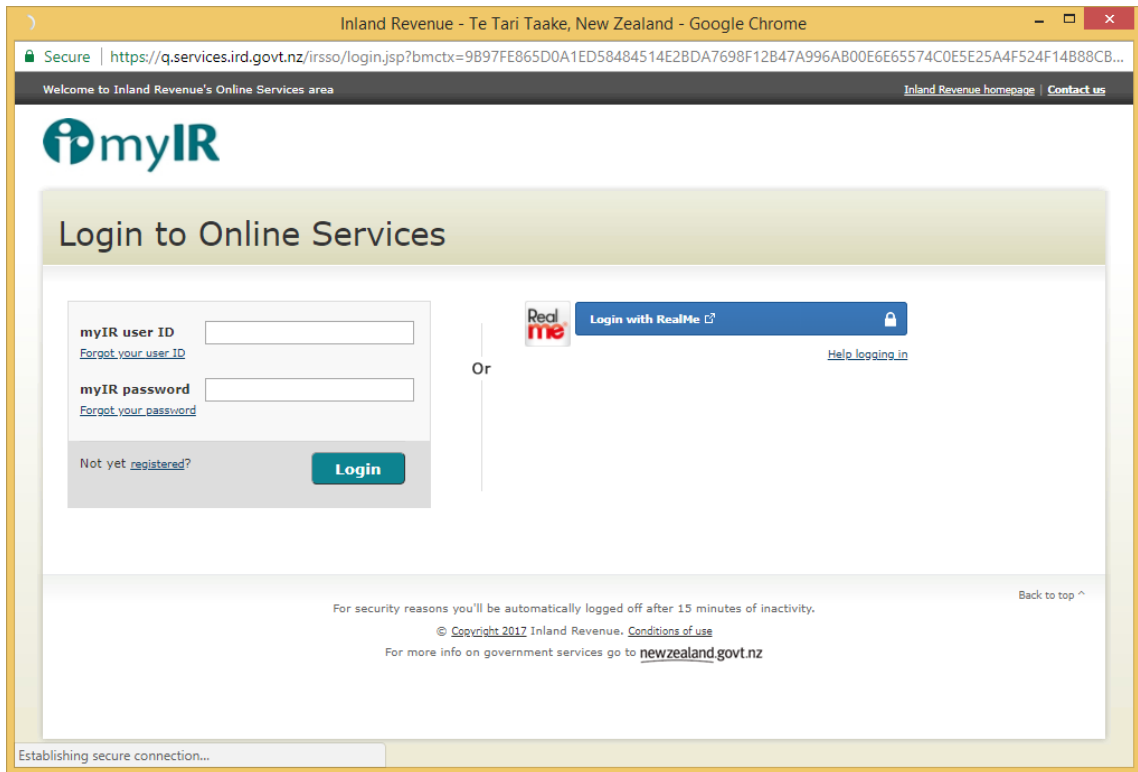
IR10	Income	Amount	INCOME determinations	
2	Sales	71864.00	Invoiced sales adjustment	150100.00
3	Opening stock	63792.00	Closing stock adjustment	25000.00
4	Purchases	4536.00	Assessed prior year losses	0.00
5	Closing stock	13000.00	Recovered dep'n adjustment	0.00
6	Gross profit	16536.00		
7	Interest received	1112.00		
8	Dividends received	0.00		
9	Rent, lease, licence income	8549.00		
10	Other income	49.00		
11	Total income	26246.00		
IR10	Expenses	Amount	EXPENSE determinations	
12	Bad Debts	732.00	Creditor expense adjustment	0.00
13	Depreciation/Amortisation	3460.00	Depreciation adjustment	0.00
14	Insurance	3237.00	Private use expense adjustment	0.00
15	Interest expense	343.00		
16	Fees	0.00		
17	Rates	463.00		
18	Rent/Leases/Licences	5832.00		
19	Repairs and maintenance	627.00	Shareholder salary provision	0.00
20	Research and development	0.00	Tax paid on salaries provision	0.00

IRD Authentication

When using any of the functions where a connection to IRD is required (Prepop, Check IRD Status, Lodge), you will be prompted to enter your IRD Tax Agent details.

Once the token has been updated, you will not have to do this again until either the token expires, or you wish to submit under another Tax Agent.

If you do not have a Tax Agent login, or for any other problems logging in at this stage, please refer to IRD support.



Please note that switching tax agents will require the browser to be closed in order to allow the next tax agent to login. Therefore, if you do use multiple tax agents, it may be advisable to process in batches of clients that use the same agent, to avoid having to close your browser and re-open multiple times.