

APS

A RECKON PRODUCT 

UPGRADE AND INSTALLATION NOTES



APS Cloud Applications

Author

Created and Published by Reckon Limited
Level 2, 100 Pacific Highway
North Sydney NSW 2060
Australia
ACN 003 348 730
All Rights Reserved
Copyright © 2015 Reckon Limited

Copyright & Trademarks

No part of these materials may be reproduced or transmitted in any form or by any means, including photocopying, without written permission of Reckon Limited.

Every effort has been made to ensure the accuracy and completeness of this manual. However, neither Reckon Limited, its subsidiaries, employees and agents, are liable for any errors or omissions. This document should not be relied on as a detailed specification of the system. In addition, Reckon Limited reserves the right to issue revisions, enhancements and improvements to Reckon APS software or any other Reckon software at any time without notice. Every effort will be made to ensure that the manual is updated concurrently and that the user is not inconvenienced as a result of any change.

Reckon, Reckon logos, R logos, Reckon APS, Advance and Accountable Technology are trademarks of Reckon Limited.

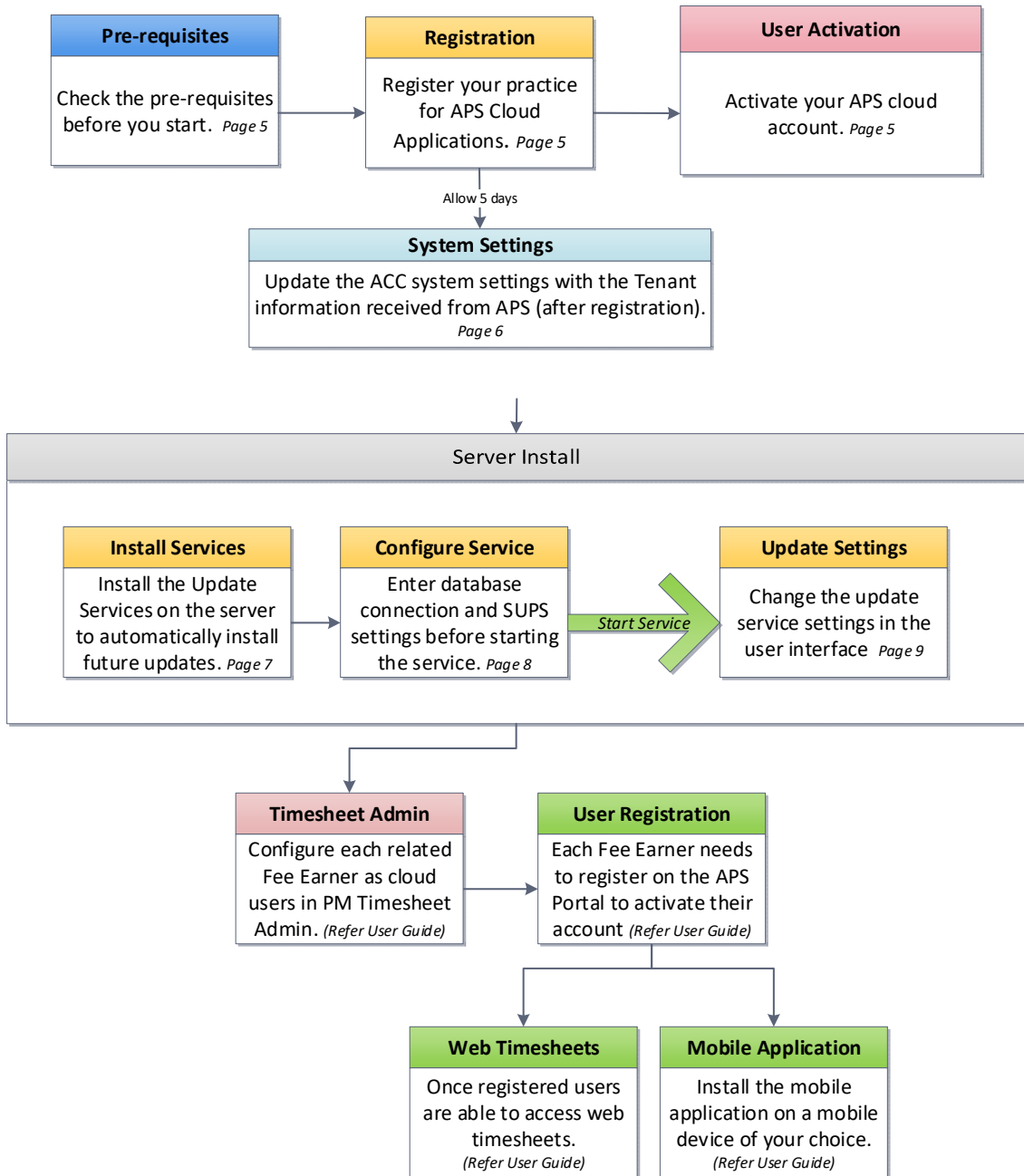
Contents

Cloud Application Installation	4
APS Cloud Applications	5
Pre-requisite	5
Cloud Application Registration	5
Activate the APS Cloud System account.....	5
System Settings	6
Before You Begin	6
Desktop Installation Instructions.....	6
Server components	6
Update Service (Reckon APS Cloud Update Service)	6
Scheduling Service (Reckon APS Cloud Scheduling Service).....	7
Installing the Update Service.....	7
Update Service User Interface	12
Terminal Server Users	14
Using Cloud Timesheets.....	14
APPENDIX 1	15
APPENDIX 2	15
APPENDIX 3	16

Cloud Application Installation

For Cloud Timesheets, Bank Data for Accountants, NZ Tax TDS, Workflow+, Contacts+, Ledger+ and APS Partner Integrations.

Cloud Application Installation



APS Cloud Applications



IMPORTANT!

You only need to follow these instructions if you intend to install Cloud applications for your practice.

Pre-requisite

- APS Practice Management version 11.2.2 + Corrections since Release (hotfixes) or above - [found here](#).
- .NET Framework Version 4.6.1 installed on the Synchronisation server.

Cloud Application Registration

Before beginning the Cloud Applications installation, the Practice is required to register for Cloud Applications.

Click [here](#) to register and activate cloud services. Please specifically note the following fields:

Cloud System Account Email:

An email address within your domain which will be used to authenticate your on-premises APS services with your cloud environment. Required attributes:

- globally unique across all APS cloud tenants
- secure (people with access to this email account will be able to reset the password)
- not belong to a physical person for security reasons

Whilst not essential, our recommendation is for you to create a new email account specifically for this purpose (eg. apscloudsystemaccount@mypracticename.com) and restrict access to this to relevant people in IT only.

If you are creating multiple tenants then you will require unique email accounts for each.

Domain name (optional):

A friendly tenant name that is visible to your users. If omitted we will choose one based on your email domain. If you have multiple APS databases, each tenant will require a unique domain name.

Notification Email:

Any email address of your choice to which we will from time to time send notification emails relevant to the operation of the APS cloud services. Recommendation is for an IT support email address

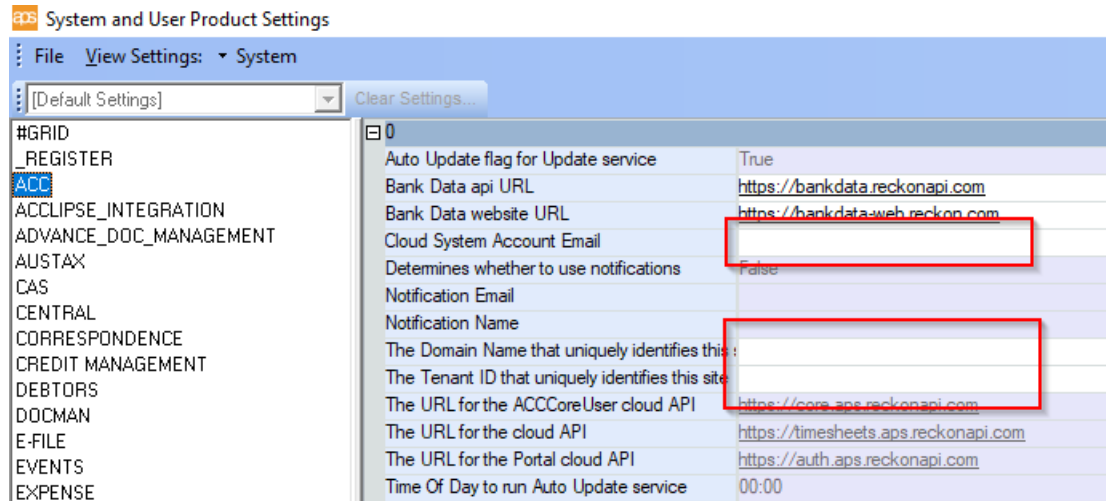
APS will provide the Practice with a Tenant ID and a Domain name within 5 days, this information is required to complete the installation. An activation email will be sent to the nominated shared email address provided above and must be activated within 90 days. If you do not have this information you will not be able to complete the installation.

Activate the APS Cloud System account

Following registration an email with your temporary password will be sent to the APS Cloud System email address specified when registering. Using the link in this email, please ensure you complete the signup process.

System Settings


Set System and Users settings for the Domain Name and Tenant ID in the System and User settings in the ACC group as shown below.



Before You Begin

Desktop Installation Instructions

All workstation installations of APS Practice Management must have PM 11.2.2 installed. This can be verified by going to your 'Add/Remove Programs' or 'Programs and Features', depending on your operating system.

 APS Practice Management Version 11.2.2 (2021.09) | Reckon Ltd | 25/09/2021 | 344 MB

Server components

APS Cloud applications use a synchronisation service to synchronise data between the APS SQL database and the Cloud databases. There are two Windows Services required to support the synchronisation engine:

Update Service (Reckon APS Cloud Update Service)

APS Cloud timesheets is a cloud application, it is important to keep all parts of the application up to date. The Update Service has been developed to support the APS cloud services. Its purpose is to automatically install the synchronisation service and supporting server-side modules that synchronise data to and from the Cloud database. When new applications and application versions are made available, these will automatically be installed, and the database will be upgraded where applicable. The update service can be installed on either the SQL server, a middle-tier application server or the PIQ server.

Scheduling Service (Reckon APS Cloud Scheduling Service)

The Scheduling service synchronises data between the on-premise Microsoft SQL Server and the Cloud data stores. This service is installed on the same server as the Update Service. Authentication for synchronisation is provided by the APS Authentication Services. It is recommended that a dedicated account be used for the synchronisation.

Note: If APS Security Model is used then the user account that runs this service must be configured to a windows account linked to a Fee Earner who is assigned the Administrator Security Model Group to allow it so see all clients.

Installing the Update Service

The Update Service has been developed to support the APS cloud applications, its purpose is to automatically install the synchronisation service and supporting server-side modules that synchronise data to and from the Cloud database. When new applications and application versions are made available these will be automatically installed and the database upgraded as applicable.



NOTE!

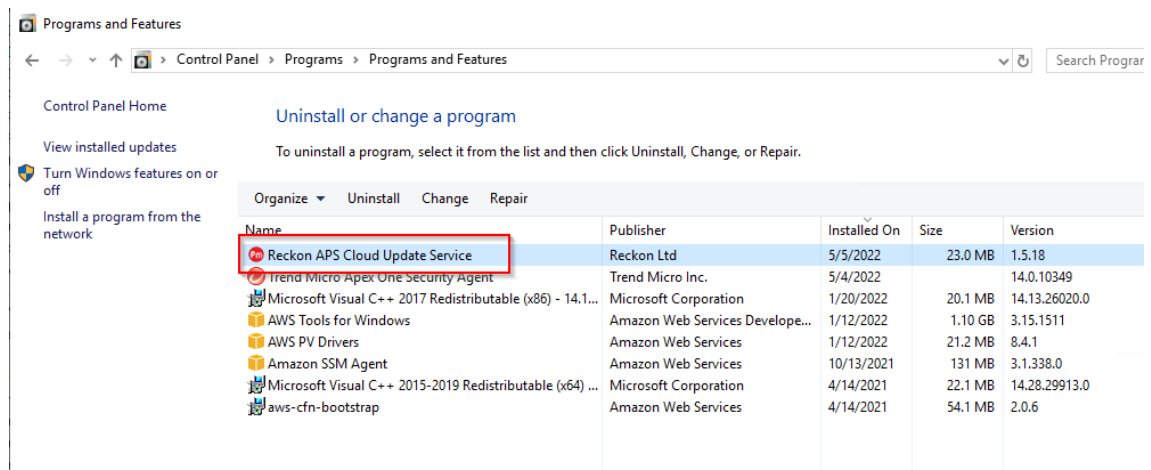
Microsoft .Net Framework version 4.6.1 must be installed on this server before the Update Service will run.

Installation

Run the APS Cloud Update service installer, “APSAutoUpdateService.msi”, this will install the update service. This is a very small installation and there are no prompts other than the Windows Security prompt.

Confirm the installation

Open the Control Panel and confirm the program has been installed:



NOTE!

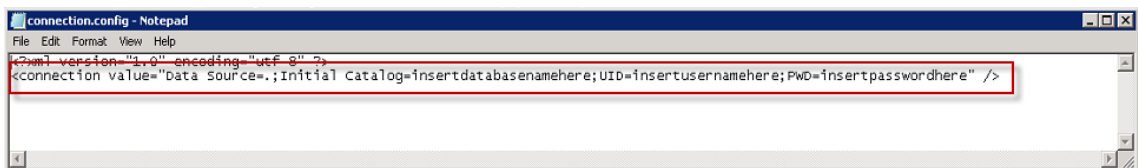
DO NOT start the APS Cloud Update Service yet.

Have you completed the signup process for your APS Cloud System Account ?

Configuring the APS Cloud Update Service

To set the connections details, navigate to “C:\ProgramData\Reckon\APS’. If the ‘ProgramData’ folder is not visible, please be aware that this is a hidden folder.

Open the file “connection.config” using Notepad (or a text editor of your choice).



Settings

Setting	Value
Data Source=	SQL Server Name
Initial Catalog=	Database name (aps_dsqli)
UID=	SQL User account with DBO Access ()
PWD=	SQL User password

Sample connection strings

SQL Authentication

```
<connection value="Data Source=SERVERNAME;Initial
Catalog=DATABASENAME;UID=USERNAME;PWD=PASSWORD" />
```

Windows Authentication

```
<connection value="Data Source=SERVERNAME;Initial
Catalog=DATABASENAME;Integrated Security=True" />
```

NOTE: When using Integrated Security (Windows Authentication) the Windows User Account that runs the Scheduling Service must have DBO access to the APS SQL database as the database upgrades will be run using this account.

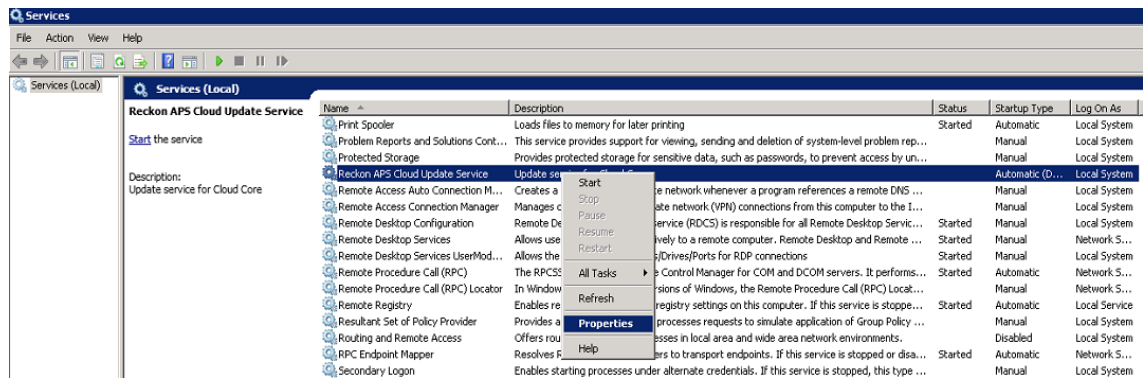
NOTE: If using Windows Authentication the Scheduling Service must also use the same account that is being used for the Update Service. The Scheduling Service will be installed by the Update Service as detailed in the *Update Service User Interface* sections later in this document.

NOTE: If using a SQL Server instance then the SQL Instance name must be included with the SQL server name the same way that is done with your APS connection string.
 Eg <connection value="Data Source=SERVERNAME\SQLInstanceName;Initial Catalog=DATABASENAME;Integrated Security=True" />

Configure Service Account settings

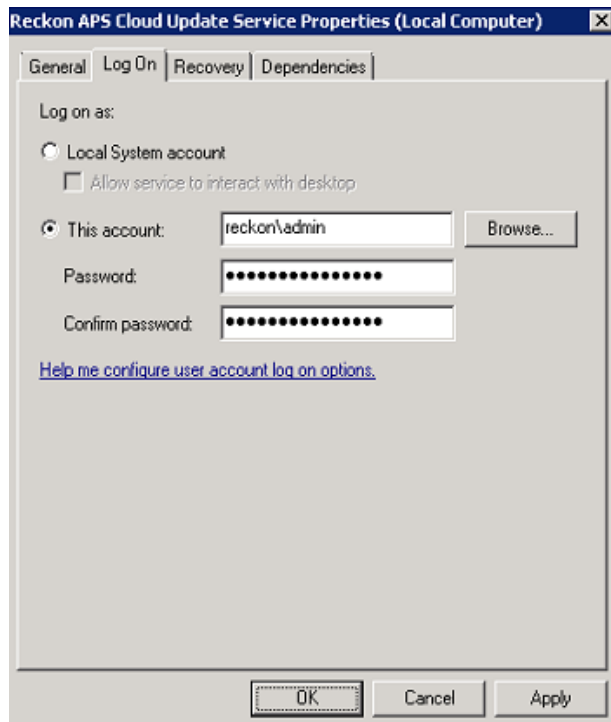
The APS Cloud update service needs to run with a user account that has permissions to install applications on the server (in some environments the default local system is adequate). This will allow the update service to update the applications as required to match the updates that are released to the mobile and web applications.

From Administrative Tools, open Services.



Select the APS Cloud Update Service, right-click and select Properties.

Select the "Log on" tab and set the account to an account that has permissions to install applications. If you are going to use a Trusted Connection to connect to the SQL database, then this account must also have DBO access to the APS SQL database to allow the upgrade scripts to be run against the database.

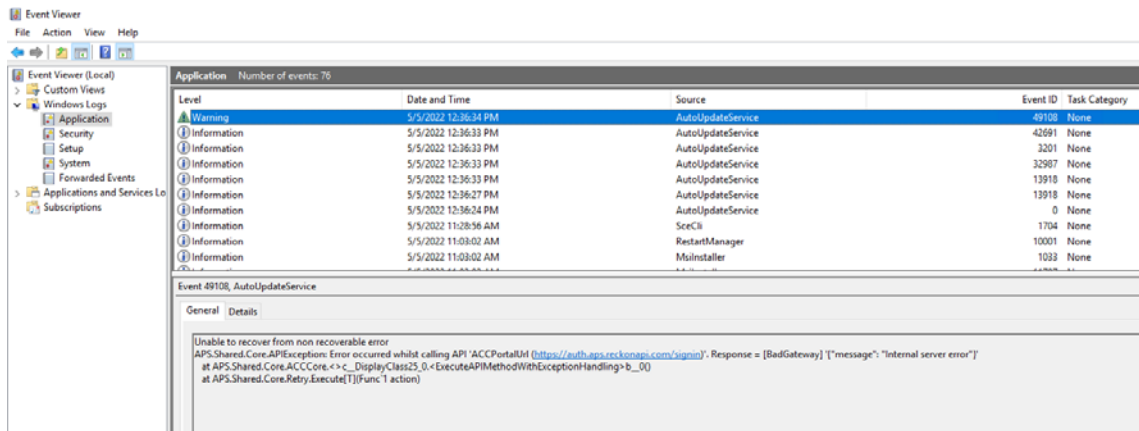


Select OK to save these settings.

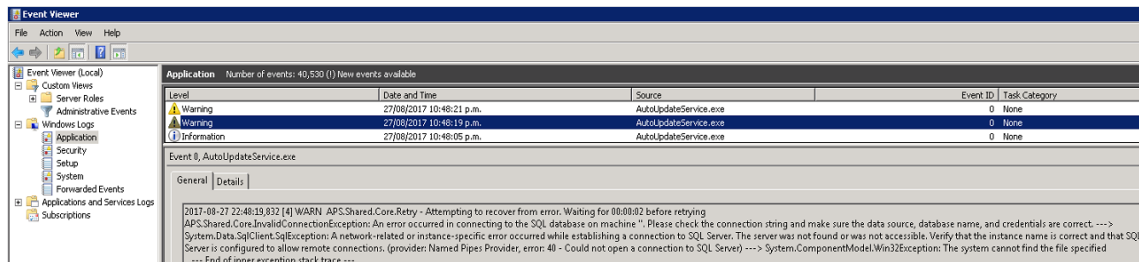
NOTE: If the account is changed for the Update Service, it must also be changed for the Scheduling Service. The Scheduling Service will be installed by the Update Service as detailed in the *Update Service User Interface* sections later in this document.

Starting the Update Service

Start the service. If the service connects to the database OK, then the following message will be displayed in Windows Event Viewer - Note despite the warning, the service continues to run.



If the service is not able to connect to the SQL database then the service will stop. The Windows Event log will display a message like:

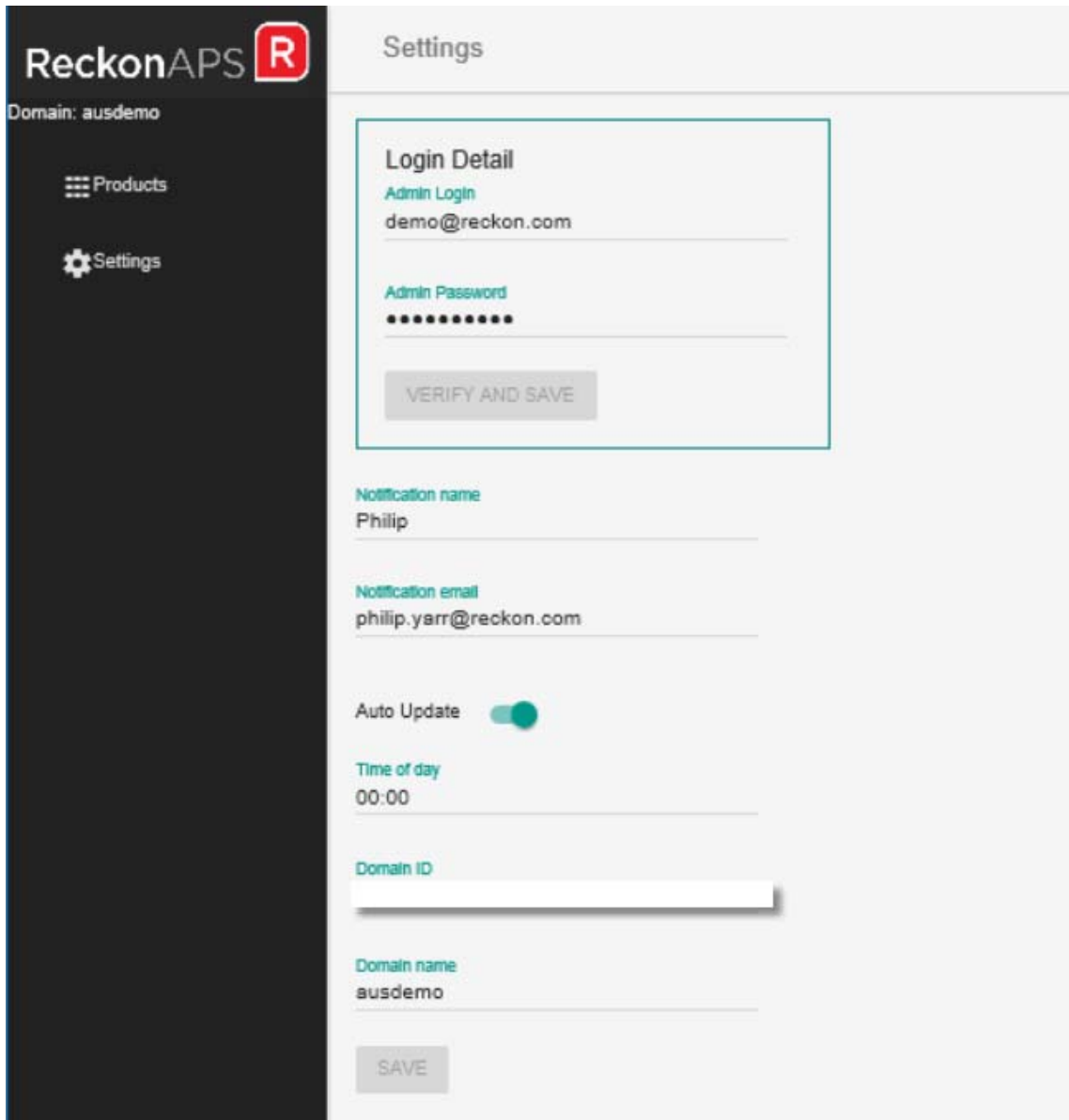


The Update service, when started successfully, will check for updates and install any required modules. Database updates for the Cloud modules are included.

Update Service User Interface

The Update Service comes with a web based User Interface. To access the interface, open a web browser and enter the address <http://localhost:7331>. Open the settings page and complete the settings.

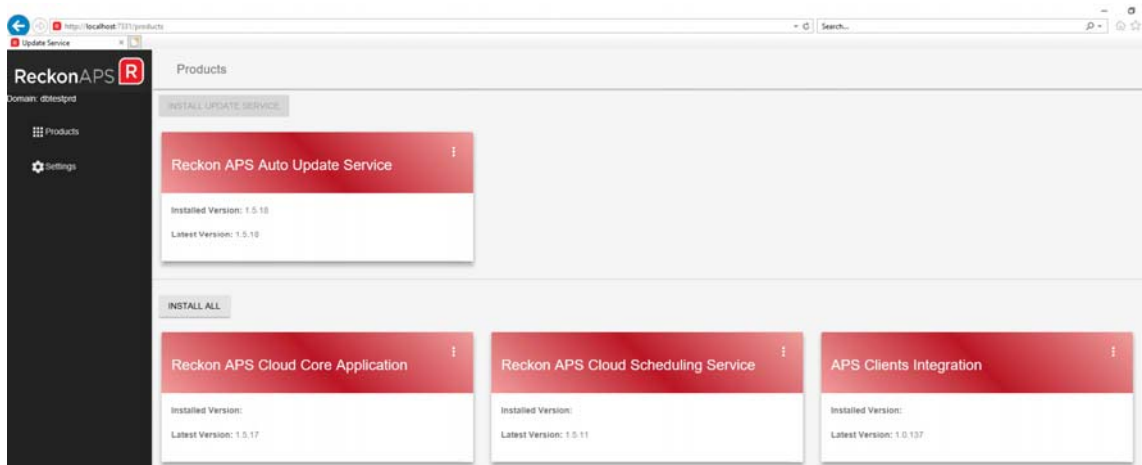
The minimum details required are Cloud System Account Password (created as part of Cloud Application Registration), this must be set for the update service to run correctly.



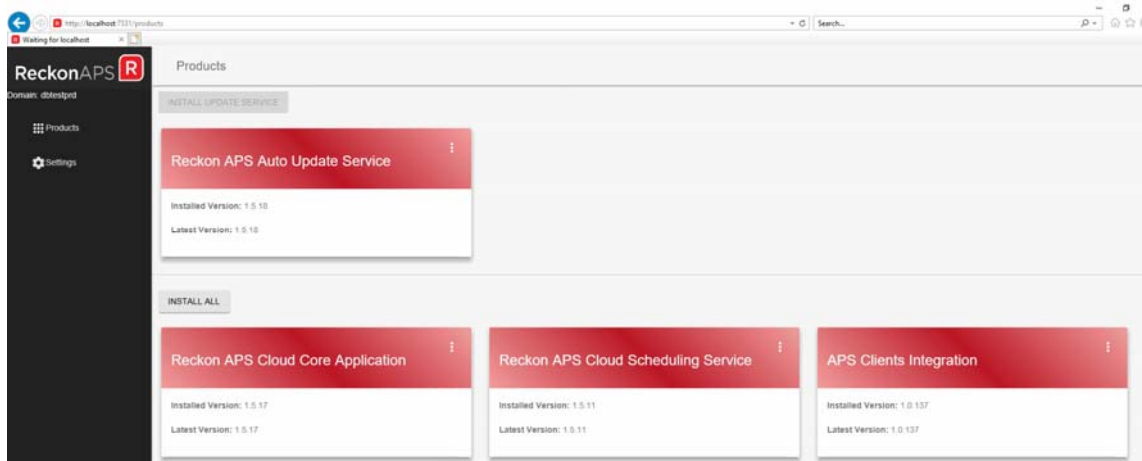
Settings definitions

Setting	Value
Auto Update	Yes/No switch – will install updates as they become available
Notification name	Internal APS Administrator who will receive email notifications
Notification email	Email address for above notifications
Time of Day	Time of day to check for and install updates
Domain ID	Tenant ID/GUID provided by
Domain Name	User friendly Tenant name used to identify your practice within the APS Cloud environment
Cloud System Account Email	APS Authentication Services Account used by the server to authenticate when connecting to the APS Cloud
Cloud System Account Password	APS Authentication Services Account password used by the server to authenticate when connecting to the APS Cloud

Once the settings have been completed, select the Products page. If the installed option “INSTALL UPDATE SERVICE” is enabled, select “INSTALL UPDATE SERVICE” to update the “Update Service”. Once the latest version of the Update service is installed, other modules can be installed or updated. Select “INSTALL ALL” to install all the modules onto the server.




When all the update services have been installed, the modules will show their installed version and the latest available version.



Terminal Server Users

All Terminal Servers must have PM 11.2.2 installed. This can be verified by going to your 'Add/Remove Programs' or 'Programs and Features', depending on your operating system.

 APS Practice Management Version 11.2.2 (2021.09)	Reckon Ltd	25/09/2021	344 MB
---	------------	------------	--------

Using Cloud Timesheets

For details on how to setup and enable Cloud Timesheets for the Practice users, please refer to the APS Cloud Timesheet user guide.

APPENDIX 1

Recommended practice – SQL Authentication

Where the firm elects to use SQL Authentication in the configuration string, the recommended practice for setting up the Cloud Server is as follows:

- Ensure the Local System account on the server where the Reckon APS Cloud Update Service and Reckon APS Cloud Scheduling Service are being installed has installation rights on that server.
- Configure both services to run under the Local System Account (refer page 9)
 - Do not allow the service to interact with the desktop
- Set up the connection.config file with the string for SQL Authentication (refer page 8)
 - UID is any SQL Security Login that has 'dbo' rights on the database being used for the Cloud Services. Consider using the same account that is used in your aADBConf.exe configuration string that's used for connecting APS to the database.
 - PWD is the password used by the above account. It might be a blank password if you use the 'admin' account used by many firms

APPENDIX 2

Recommended practice – Integrated Security (Windows Authentication)

Where the firm elects to use Integrated Security also known as Windows Authentication in the configuration string, the recommended practice for setting up the Cloud Server is as follows:

- Set up a dedicated Domain login account for running the Reckon APS Cloud Update Service and Reckon APS Cloud Scheduling Service.
- Ensure the password on this account does not expire.
- Ensure this account has installation rights on the server where the Cloud Services are being installed.
- Configure both services to run under the dedicated Domain account (refer page 9).
- Set up the connection.config file with the string for Windows Authentication (refer page 8)
- Add the dedicated Domain account as a Security Login on the SQL Server
 - Account to be granted 'public' and 'sysadmin' Server Roles
 - Account to be granted 'dbo' Default Schema rights on the database under User Mapping

APPENDIX 3

Where internet access and outbound firewall rules are in place for the server running the Reckon APS Cloud services, access to the the following URLs and Ports will need to be enabled.

logs.ap-southeast-2.amazonaws.com:443
cognito-identity.ap-southeast-2.amazonaws.com:443
acccore-apps-prod.s3.ap-southeast-2.amazonaws.com:443
acccore-autoupdateservice-prod.s3.ap-southeast-2.amazonaws.com:443
acccore-schedulingservice-prod.s3.ap-southeast-2.amazonaws.com:443
acctimesheets-apps-prod.s3.ap-southeast-2.amazonaws.com:443
apsaustaxreturnintegration-apps-prod.s3.ap-southeast-2.amazonaws.com:443
apsclient-onboarding-prod.s3.ap-southeast-2.amazonaws.com:443
apsclienthub-apps-prod.s3.ap-southeast-2.amazonaws.com:443
apsclients-apps-prod.s3.ap-southeast-2.amazonaws.com:443
apstenants-prod.s3.ap-southeast-2.amazonaws.com:443

auth.aps.reckonapi.com:443
core.aps.reckonapi.com:443
timesheets.aps.reckonapi.com:443
hub.aps.reckonapi.com:443
timesheets.aps.reckon.com:443
workflow.aps.reckon.com:443
contacts.aps.reckon.com:443
tum.aps.reckonapi.com:443
ledger.aps.reckon.com:443
ledger.aps.reckonapi.com:443

kafka.aps.reckon.com:17910
kafka-aps-prod-aps-prod.aivencloud.com:17913